

LUMINARY

Brisbane's Business and Community Journal

What's Inside..... Page
 Blast From the Past2
 Trash Talk: Green=Compost.....2
 Brisbane School District News.....3
 Financial Focus.....3
 Brisbane Business Bulletin.....6
 Community Energy Means More Affordable Energy.....6
 Annual Building Benchmarking Reporting.....6
 Building A Brighter Future.....7
 Fun Adult Oil Painting Class.....7
 Accepting Scholarship Applications.....7

BRISBANE INN: A LOCAL TOUCHSTONE REBORN

BY: MADISON DAVIS, PRESIDENT AND CEO, BRISBANE CHAMBER OF COMMERCE, MADISON@BRISBANECHAMBER.ORG, 415-706-5276

The Brisbane Inn, a beloved community hub for generations, is back after a fire and ready to reclaim its place as the heart of Brisbane's social scene. Owned and operated by cousins Tiffany Melvin and Linda Greer, the Inn boasts a rich history dating back to the late 1930s. A gathering spot for residents to connect, the business has served three generations of customers under the Mozetti family. Family members Nino, Dico, and Lena ran the bar, and upon Nino's passing, the Inn was willed to his cousins Linda and Brad. The Inn continues its legacy under Tiffany, Brad's daughter, and Linda.

The Inn has faced its share of challenges. A fire in the 60s led to the wooden structure's demise. Nino Mozetti was determined to rebuild with fire-resistant brick because "brick don't burn." A choice that proved wise when another fire struck five years ago. The brick first floor remained largely unscathed, a testament to Nino's foresight.

Looking to the future, Tiffany and Linda envision the Inn as a welcoming space for the entire community. They aim to create a comfortable and inclusive atmosphere where people can bring their dogs, enjoy live music on Fridays and Saturdays, and savor delicious drinks. The focus is on creating a central gathering place that pays homage to the Inn's history while offering a fresh, clean, updated experience where everyone feels welcome and safe.

The beverage menu offers something for everyone- including classic cocktails like cosmos, lemon drops, and manhattans, a mix of craft, domestic, and international beers offered by draft and by the bottle, and a well-rounded wine selection. Prices are reasonable, with most cocktails ranging from \$8-\$10, beers from \$4-\$7, and wines by the glass at \$7. Wines by the bottle run \$28-\$32.

Live music, a cornerstone of the Inn's past thanks to Brad's passion for music, remains a critical element to the bar's identity. Tiffany's uncle books diverse bands, keeping Brisbane's tradition of live music on Vistacion Avenue alive.

As the Inn undergoes plumbing upgrades, Linda and Tiffany are committed to minimizing disruption and keeping their doors open. They welcome well-behaved dogs on leashes and encourage patrons to bring in outside food. The Chamber invites you to join us for a ribbon-cutting ceremony and mixer on March 20th from 5-7 pm. The Inn will also host a grand re-opening party on March 22nd from 4-10 pm, with live music starting at 7 pm.

The Brisbane Inn is located at 50 Visitacion Ave and is open Wednesday through Sunday from 4-10 pm, with extended hours on busy nights. Stop by, order a drink, enjoy live music, and reconnect with your community at this historic Brisbane institution. Make sure to mention reading about the Brisbane Inn in *The Luminary*!



Brisbane Inn Owners:
Tiffany Melvin and Linda Greer



MAYOR'S Message

ADVANCED AIR MOBILITY- DRONES IN OUR FUTURE?

BY: TERRY O'CONNELL, MAYOR OF THE CITY OF BRISBANE, TERRYOCONNELL@BRISBANECA.ORG

Whether you see them as a challenge or an opportunity, AAM vehicles are in our future.

AAM is defined as a transportation system that moves people and cargo by air, using advanced technologies including electric aircraft or electric vertical takeoff systems. These can be manned or unmanned (drones) and both the State of California and the Federal Aviation Administration are planning for their future.

>> CONTINUED ON PAGE 2



SUPERVISOR'S Message

COUNTY OFFERS NEW LIFELINE FOR THOSE IN MENTAL HEALTH CRISIS

BY: DAVID J. CANEPA, PRESIDENT OF THE SAN MATEO COUNTY SUPERVISORS, DCANEPA@SMCGOV.ORG, 650-363-4572

For individuals and their families in need of immediate clinical and peer counseling support now have a new lifeline the county is offering. The Board of Supervisors unanimously voted Tuesday, February 27 to adopt a resolution authorizing a \$4.9 million two-year agreement with Telecare Corporation for "Unarmed Mobile Mental Health Crisis Response Services" for individuals in crisis and their families who call 988 or the StarVista

>> CONTINUED ON PAGE 2

YOU'RE INVITED! 

MIXER & RIBBON CUTTING CEREMONY

Wednesday, March 20 from 5-7PM
 Hosted by The Brisbane Inn
 50 Visitacion Ave
 RSVP TO: madison@brisbanechamber.org





BRISBANE CHAMBER OF COMMERCE SCHOLARSHIPS

APPLICATIONS ARE AVAILABLE NOW AND ARE DUE BY APRIL 12
 APPLY AT: BRISBANECHAMBER.ORG




CHAMBER CIRCLE MEMBERS

Baylands Development Inc
 BiRite Foodservice Distributors
 City of Brisbane
 Golden State Lumber
 Homewood Suites
 Integrated Resources Group
 Lyon Medical Construction

Peninsula Clean Energy
 Recology
 South San Francisco Scavenger Co., Inc.

The Chamber Circle is a special group of members that have committed to support the Brisbane Chamber of Commerce through sponsorships. If your business would like to become a member of the Chamber's Circle, please contact Madison Davis, President/CEO at 415-467-7283 or e-mail madison@brisbanechamber.org.

PRESORTED STANDARD
 U.S. POSTAGE PAID
 SAN FRANCISCO, CA
 PERMIT No. 80

BRISBANE CHAMBER OF COMMERCE
 50 PARK PLACE, BRISBANE, CA 94005
 415-467-7283
BRISBANE4BUSINESS@BRISBANECHAMBER.ORG
 ORG



*****ECRWSSEDDM****
 POSTAL CUSTOMER
 BRISBANE, CA 94005

Supervisor's Message, continued from page 1

hotline at (650) 579-0350.

We've seen suicide rates continue to climb which is a leading cause of death for children aged 10-14, young adults 20-34, and men, mostly white, 75 years and older. Now, the county will be able to provide unprecedented services, offering a new lifeline with in-person clinical support for those in crisis or feeling suicidal right where you live. This is 24/7 unarmed and compassionate approach meant to keep individuals out of our emergency rooms or jails and handled with care by trained clinicians.

The service will partially begin in May with one team during evening weekday hours before fully ramping up by August to five 24/7 teams and two on-call teams. It will be for people who do not need immediate hospitalization and Telecare's vans will be strategically placed throughout the county including Daly City.

Once 988 calls are screened by StarVista, the hotline will dispatch clinicians trained in crisis assessment, de-escalation and intervention. They will arrive in nondescript vehicles – no lights and sirens – around-the-clock, any day of the year with the goal of stabilizing situations and, if necessary, taking individuals or arranging transportation to the appropriate level of care.

The county along with Telecare and StarVista will develop an outreach campaign to promote awareness of the hotline number and the service.

Mayor's Message, continued from page 1

These new technologies are being developed for both regional use, connecting suburbs, towns and rural areas, and to connect urban centers and airports.

Many of these vehicle are commonly referred to as Drones, but the technical name is UAS- Uncrewed Aircraft Systems. These vehicles are categorized as "small" under 55 pounds or "large" over 55 pounds.

Theses vehicles can be used for

Cargo- Last Mile-Airport to warehouse & Airport to Vertiport

Medical- Patients, Organs, Blood, Supplies

Passengers- Inter and Intra city travel

On Demand- Air Taxi's

Scheduled- Air Taxi's

Still to be determined is the route that these electric vehicles will take through our communities and where the Vertiports will be located. Due to their smaller size and weight, it is thought that they will need to have multiple ports to land and recharge. There is also concerns with how the traffic will be managed, especially around major airports , where a majority of their uses will be.

Some of the pitfalls that would need to be examined before your packages are delivered by remote air vehicles is that operations will need to increase their utilization of existing airport infrastructure and increased operations will also need new infrastructure, such as vertiports .

High real-estate prices will also cause potential limits on placement of the infrastructure in dense congested urban areas where real estate is limited and costly another consideration of potential growth and cost is limited space. Rooftops are not equipped for aircraft, charging, and emergency response, and parking garages are quite low in height. Also, these vehicles cost a lot! On-demand services require significantly more carriers than scheduled ones. Airspace integration is complicated and airspace is usually most congested in the cities that could benefit from air services. Other challenges like certification cost, operations in bad weather, passenger rooftop access, and other issues abound.

Last but not least, do we want them in our communities? And how will we manage them? These are the discussions that need to take place on the SFO Airport/Community Roundtable in which I serve as Brisbane's representative. While this technology may not be in widespread use yet, we have to plan for how it will be utilized and managed in our cities in the coming years, love it or hate it.

TRASH TALK: GREEN=COMPOST

BY: TERESA MONTGOMERY, CHAMBER BOARD MEMBER AND SUSTAINABILITY MANAGER AT SSF SCAVENGER, AND ADRIENNE ETHERTON, SUSTAINABILITY MANAGER AT CITY OF BRISBANE

California Senate Bill 1383 aims to keep organic waste out of landfills. The goal is to recycle or compost everything possible and avoid landfilling. To make organic waste bins easy to locate, the Bill requires bins to be green in color. The Bill also requires that all waste collection bins bear labels showing common items that belong inside as well as those that are prohibited.

As you travel across our community and any other in California, green bins should be more and more common. Look for them in parks, cafeterias, airports, fast food restaurants, hotels, classrooms, special events and venues, and anywhere else you might go. If you run across organic/compostable waste bins at your school, apartment complex, or workplace that are not green or well-labeled, see what you can do to make changes. Please do not dispose of any old collection

BLAST From The Past

The following article is an editorial from *The Brisbane Sun*, published August 26, 1933.

Editorial


Neighbors of Brisbane—Our community is growing rapidly—131 new houses in the last 2 years. There is every good reason to believe this growth will continue, as this is the ideal sunshine residence suburb.

Our water system is old and weak. In size of pipes it is inadequate. We have insufficient water for fire protection even now. Two-inch mains in some of the streets won't carry enough water for domestic use, and the older pipes will not stand pumping pressure.

Who is to rebuild, or replace this system? If the present water companies can and will take care of this problem, well and good. If not, the only course to pursue, and many believe the best in any case, is for Brisbane to build, own and operate its own water system. The wholesale rates specified in the Brisbane contract with the supplying company, are extremely favorable. The actual facts in this connection will be laid before you at a future time.

This is a matter that should inspire the most earnest thought and consideration on the part of all our people. What do YOU think about it? Write us a letter. In case we have a campaign on, or negotiations pending for improvement to our water system, who is going to represent us? Who can do our business for us?—Think this over before you unadvisedly do away with our Public Utility District.

The Public Utility Board is legally constituted to meet and properly handle just such problems as representatives of all the people. Its members are elected by you, and up to this time have served you absolutely without compensation. Do you appreciate their efforts? Will you appreciate the self-sacrificing efforts of any public official? We believe you will—when fully informed on the community's needs and the simplest most direct and inexpensive way to care for them. You newcomers in the tract, as well as the pioneers—let the community hear from you through our well established medium of community publicity and information—*The Brisbane Sun*.



2024 Board of Directors

Chairperson of the Board
Sue Cochran
 Cochran Construction

Tamara Palmer-Heath

Secretary of the Board
Teresa Montgomery
 SSF Scavenger Company, Inc.n

Treasurer of the Board
Jason Cranston
 JLL

Members of the Board
Freddy Beaman
 US Bank

Rich Borghello
 Recology

Cristian Cabrera
 J Style at Home

Dilmohan S. Chadha
 Integrated Resources Group, Inc.

Jason Cranston
 JLL

Mary Shulenberger
 Parle Enterprises

Jennifer Wilder-Smith
 BiRite Foodservice Distributors

Andy Lopez
 Golden State Lumber

President and CEO
 Publisher/Editor of the Luminary
Madison Davis
 (415) 467-7283
madison@brisbanechamber.org

Luminary Layout by
Christine Deyto
 (415) 216-7044
cdeyto@gmail.com

Published by the Brisbane Chamber of Commerce
 50 Park Place, Second Floor
 Brisbane, CA 94005
 (415) 467-7283


website: www.brisbanechamber.org
[Facebook.com/brisbanechamberofcommerce](https://www.facebook.com/brisbanechamberofcommerce)

Deadline for Articles and Advertisements:
 2nd Tuesday of each month

E-mail your article, advertisement or questions
madison@brisbanechamber.org (415) 467-7283.

Advertisements are interactive on the Luminary
 posted to the web and on social media.

Mission Statement: The purpose of the Brisbane Chamber of Commerce is to create an atmosphere in which business prospers and the community thrives.

 The Luminary is printed using recycled paper and environmentally-friendly soy-based ink.



CITY OF BRISBANE

MAKE A DIFFERENCE

Apply for Open Seats as a Committee Member or City Representative



- **Open Space and Ecology Committee**
- **Inclusion, Diversity, Equity & Accountability Committee**
- **San Mateo County Mosquito & Vector Control District**

FOR MORE INFO GO TO WWW.BRISBANECA.ORG
 OR EMAIL CITYCLERK@BRISBANECA.ORG

DEADLINE TO APPLY: TUESDAY, APRIL 30, 2024 AT 5PM

bins that are in good shape. Until January 1, 2036, it's acceptable to use an old bin that isn't the right color; just make sure it's labeled correctly. If buying new collection bins, be sure to go green for organics, blue for recycling, and grey or black for garbage.

Please visit www.brisbaneca.org/publicworks/page/waste-and-recycling and www.ca.recycle.ca.gov/organics/slcp for more information about SB 1383 and why it's so important to keep organic waste out of our landfill.

BRISBANE School District News

BRISBANE SCHOOL DISTRICT WELCOMES NANCY BUI AS NEW SUPERINTENDENT

BY: RONAN COLVER, SUPERINTENDANT, BRISBANE SCHOOL DISTRICT, RCOLLVER@BRISBANESD.ORG

The Brisbane School District Board of Trustees is pleased to announce that they unanimously voted, at their meeting on March 13, to appoint Nancy Bui as the District's next superintendent.

Ms. Bui's appointment follows an extensive search, which resulted in an excellent group of 23 highly qualified candidates. The Board's decision is a reflection of input gathered from key stakeholder groups throughout the District regarding the qualities desired in BSD's next leader.

According to Board President Karen Lentz, "The Board responded to the desires and needs of our staff, parents and community during a thorough process of outreach and information gathering. We thank everyone for their input. It helped us find the best fit for our District in our next superintendent, Nancy Bui!"

"Ms. Bui is a vibrant leader and community builder with an exemplary record of success in varied roles throughout her education career as a teacher, assistant principal, principal, and district administrator. Known for her innovation, Ms. Bui is also respectful of existing structures. Upon joining our District, she intends to focus on listening and learning as her first priorities. With a strong background in curriculum, equity, and inclusion, Ms. Bui is student-centered and highly regarded for her work with diverse school populations, including multilingual learners and students with neurodiversity, particularly those with Individualized Education Plans," says President Lentz.

"I am incredibly honored and excited to join this welcoming, close-knit, and one-of-a-kind community," says Ms. Bui. "I am deeply committed to the success and well-being of every student, and I look forward to partnering with our dedicated School Board, inspiring educators, supportive families, and engaged community members to ensure that every child achieves their full potential."

An educator and public school administrator for the past 18 years, Ms. Bui is widely agreed to be a collaborative and visionary leader with a student-centered

mindset. Before stepping into the role as an assistant principal for three years, Ms. Bui taught various courses for five years at the high school level; during this time, she specialized in teaching Language Arts, Humanities, English Language Development, Inclusion, and a College and Career elective titled Advancement Via Individual Determination (AVID).

Ms. Bui also served as principal of Sunnybrae International Baccalaureate TK-5 in San Mateo and Cesar Chavez Green Oaks Academy K-8 in East Palo Alto. During her four-year tenure as the principal of Rooftop PK-8 School in San Francisco, she received the 2020 Elementary Principal of the Year award from the Association of California School Administrators (ACSA), followed by nominations for Exemplary Woman of the Year award for two consecutive years thereafter.

Currently, she is the Director of Equity and Inclusion of the San Mateo-Foster City School District. In this role, she authored and procured major grants to improve student outcomes, addressing bias or prejudice through the lens of academic instruction. She leads professional development for teachers and support staff to promote equity throughout the student population of 11,000. Ms. Bui, a Fulbright-Hays scholar, holds degrees from the University of California, Los Angeles and Stanford University. Recently, she completed the Superintendent's Academy through ACSA.

Mr. Ronan Collver, our current Superintendent, and Ms. Bui will have an overlap of two months to collaborate and ensure a smooth transition as Ms. Bui learns about the existing operations of the district. Mr. Collver is excited about the future of the District, stating, "Our District will be in good hands after my retirement, and I am optimistic about the transition schedule we have put together to bring Nancy up to speed on the internal workings of the Brisbane School District."

Please join us in extending a warm welcome to Nancy Bui as the incoming Superintendent of the Brisbane School District. She will officially join us on July 1, 2024. We will be hosting upcoming events where you can meet our new superintendent!

FINANCIAL FOCUS

WHEN YOU SHOULD TAKE SOCIAL SECURITY?

BY: SVEN GEFFKEN, FINANCIAL ADVISOR, EDWARD JONES, SVEN.GEFFKEN@EDWARDJONES.COM, (650) 355-1365

One of your important sources of retirement income will likely be Social Security — but when should you start taking it?

You can start collecting Social Security benefits at 62, but your checks will be considerably bigger if you wait until your full retirement age, which is likely between 66 and 67. You could even wait until you're 70, at which point the payments will max out, except for yearly cost-of-living adjustments. But if you need the money, you need the money, even if you're just 62 or any age before full retirement age.

However, if you have adequate financial resources to meet your monthly needs, whether through earned income, your investment portfolio or a combination of the two, you could have some flexibility in choosing when to take Social Security. In this case, you may want to weigh these considerations:

- **Life expectancy** – For all of us, it's one of life's great mysteries: How long will we live? Of course, we can't see into the future, so the question can't be answered with total confidence. But to make an informed decision on when to take Social Security, you don't need to know your exact lifespan — you just need to make a reasonably good estimate. So, for example, if you're approaching 62, you're enjoying excellent health and you have a family history of longevity, you might conclude it's worth waiting a few years to collect Social Security, so you can receive the bigger payments. Conversely, if your health is questionable and your family has not been fortunate in terms of longevity, you might want to start taking your benefits earlier.

- **Employment** – You can certainly continue working and still receive Social Security benefits. However, if you're under your full retirement age for the entire year, Social Security will deduct \$1 from your benefits for every \$2 you earn above the annual limit of \$22,320. In the year you reach your full retirement age, Social Security will deduct \$1 in benefits for every \$3 you earn above \$59,520. So, you may want to keep these reductions in mind when deciding when to begin accepting benefits. Once you reach your full retirement age, you can earn any amount without losing benefits. (Also, at your full retirement age, Social Security will recalculate your benefit amount to credit you for the months you received reduced benefits because of your excess earnings.)

- **Spouse** – Spouses can receive two types of Social Security benefits: spousal and survivor. With a spousal benefit, your spouse can receive up to 50% of your full retirement benefits, regardless of when you start taking them. (Your spouse's benefit can be reduced by the amount of their own retirement benefit and whether they took Social Security before their full retirement age.) But with a survivor benefit, your decision about when to take Social Security can make a big difference. A surviving spouse can receive the larger of their own benefit or 100% of a deceased spouse's benefit, so if you take benefits early and receive a permanent reduction, your spouse's survivor benefit may also be reduced for their lifetime.

When to take Social Security is an important — and irrevocable — decision. So, consider all the factors before making your choice.

FAMILY DENTISTRY

JAMES E. FITZGERALD, DDS

Creating Smiles for both
Adults and Children100 Old County Road #100B
Brisbane CA 94005

(415) 468-5353

www.jamesfitzgerald dental.comJason Cranston
Managing Director
Commercial Real Estate Brokerage
Advisory & Transaction Services
Lic. #01253892

Jones Lang LaSalle
Jones Lang LaSalle Brokerage, Inc.
4085 Campbell Avenue, Suite 150
Menlo Park, CA 94025
T +1 650 480 2100 M +1 650 333 5173
jason.cranston@am.jll.com

FOODSERVICE
DISTRIBUTORS
Family Owned // // **Locally Sourced**

BiRITE is a third generation, broadline foodservice distributor that is proud to service restaurants, hotels, caterers, and universities throughout the greater Bay Area.

415.656.0187 www.birite.comFOLLOW US!

San Francisco Office
580 4th Street

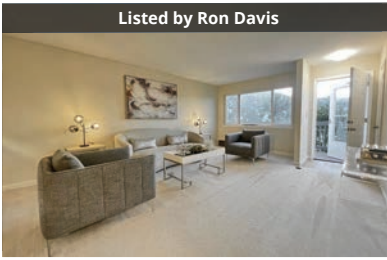


Brisbane Office
400 Visitation Ave

IT'S YOUR MOVE. WE'RE HERE TO MAKE IT SMOOTH

WITH OVER 54 YEARS OF COMBINED EXPERIENCE, WE DELIVER IN ANY HOUSING CLIMATE. OUR PROVEN SALES SUCCESS RATE, LOCAL MARKET EXPERTISE, AND STRESS-FREE PROPERTY PREPARATION STRATEGY, ARE WHAT MAKE US THE MOST-TRUSTED REAL ESTATE TEAM IN BRISBANE. WHO YOU WORK WITH MATTERS.

PENDING!



Listed by Ron Davis

737 San Bruno Ave Unit 2, Brisbane
2 bd | 1.5 bth | 992 sq ft Condo

PENDING!



Listed by Ron Davis

37 Orange Ct, Daly City
4 bd | 2 bth | 1480 sq ft Home

FOR SALE: \$975,000



Listed by Michele Jauregui

335 Monterey St, Brisbane
1 bd | 1 bth | Home w/ Studio Apt

SOLD! \$450,000



Listed by Michele Jauregui

799 Humboldt Rd, Brisbane
Vacant Lot

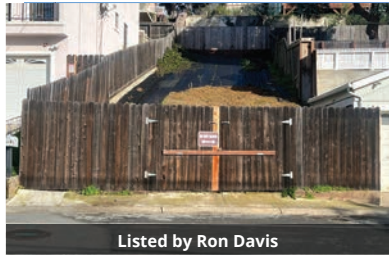
PENDING!



Listed by Ron Davis

122 Rock Wren Ln, Brisbane
2 bd | 2 bth | 1781 sq ft Townhome

FOR SALE: \$498,000



Listed by Ron Davis

Santa Clara Ave Lot, Brisbane
2500 sq ft Lot

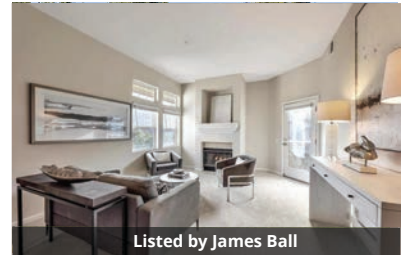
FOR SALE: \$995,000



Listed by Michele Jauregui

101 Crescent Way #2412, San Francisco
3 bd | 2 bth | 1374 sq ft Condo

SOLD! \$910,000



Listed by James Ball

634 Swallowtail Ct, Brisbane
3 bd | 2 bth | 1520 sq ft Condo

Thinking about Buying or Selling? Call us Today!
We offer complimentary professional staging when you list with us!
For more information visit VoyageRealEstateBrisbane.com

JAMES BALL

Realtor
DRE #01975342

415-309-5281
james@voyagerealestatesf.com



RON DAVIS

Broker, GRI
DRE #00961181

415-846-3077
ron@voyagerealestatesf.com



MICHELE JAUREGUI

Realtor
DRE #01801514

415-516-1977
michele@voyagerealestatesf.com



SURFACES
SELECTION
SERVICE

www.marblecompany.com

Natural Stone • Quartz • Porcelain • Tile



Call us today to schedule a visit!

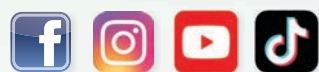
Brisbane Showroom

275 Valley Drive,
Brisbane, CA 94005
415-657-0280

GREEN = COMPOST!



In California, collection bins for compostable waste are required to be green. You can count on Ozzy the Organics Cart to "wear" green on St. Patrick's Day and EVERY day.



Learn more by following us
[@ssfscavenger](https://www.instagram.com/ssfscavenger)

An important message from



ADVERTISE WITH US

To learn more about advertising in The Luminary, email Madison Davis at madison@brisbanechamber.org



STACY HUANG | (415) 840-5704
REALTOR® DRE #02022230

JOEL DIAZ REAL ESTATE TEAM



With over 25 Years of Construction & Real Estate Development Experience, we are ready to help you with ALL your real estate needs - Call us today!



JOEL DIAZ | (650) 520-7483
REALTOR® DRE #01336882

NATIONAL TOP PRODUCER

JUST LISTED www.101ButterweedLn.com



101 Butterweed Ln - Landmark at the Ridge
5 Bed / 3 Bath 2,995 Sq.Ft.
Listed at: \$2,388,000

JUST LISTED www.200SantaClaraSt.com



200 Santa Clara - Modern Luxury Living
6 bed / 4.5 bath | 3100 sq ft
Listed at: \$2,988,000

JUST LISTED



148 Chula Vista Drive - San Rafael
Vacant Lot | *Listed at: \$488,000*
Call for details

JUST LISTED



423 Kings Rd - Brisbane
4,250 sq ft Vacant Lot | *Listed at: \$598,000*
Call for details

**NEW LISTINGS
COMING SOON!**

Call for details!

SOLD



347 Mendocino St - Brisbane
2 bed / 1 bath | 900 sq ft
Sold \$1,125,000 Multiple offers!!!

THINKING OF SELLING? WE OFFER COMPLIMENTARY STAGING AND HOME PREPARATION WHEN YOU LIST WITH US!
想出售你的房產嗎？請致電讓交易成功的產經紀和公司！我們提供專業的上市準備和裝飾工作。謝謝！ 🏠📄

www.BrisbaneCA.com
We have new listings coming soon!



THE BAY LANDS

Explore News & Project Updates
👇

www.thebaylands.com



★ **MIDTOWN MARKET**

✓ **WE ARE OPEN** ★
TO SERVE THE COMMUNITY

Open Every Day 6:00am-12:00am Year Round

Groceries, Bakery, Produce, Dairy, Cheese, Deli, Coffee, Tea, Sundries, Flowers, Liquor, Wine, and Beer ★

★ **249 Visitacion Avenue**
Brisbane, CA 94005
(415) 467-1424 

Our Community Is At The Heart of Everything We Do.

J Style at Home Inc. 

www.jstyleathome.com

Custom Design and Cabinets that fit your life style...
Dedicated Professionals that meet your Scope, Schedule and Budget!

3890 Bayshore Blvd, Brisbane CA 94005 DIRECT 415 / 494 5661
EMAIL customer-service@jstyleathome.com FAX 415 / 494 5864
California Contractor Lic. 963554

Proudly Serving Contractors & Homeowners Since 1980

GOLDEN STATE LUMBER

Quality and Service ★ We Deliver

Phone: (415) 468-1000
Fax: (415) 468-4690
601 Tunnel Avenue
Brisbane, CA 94005



www.goldenstatelumber.com

BRISBANE BUSINESS BULLETIN

“The Brisbane Business Bulletin” allows Brisbane Chamber of Commerce members to communicate brief bits of news to the public such as change of hours, new product offerings, upcoming events, etc. If you are interested in listing a news item next month, please contact Madison Davis at madison@brisbanechamber.org

Next Chamber Mixer & Ribbon Cutting Ceremony: Wednesday, March 20 at The Brisbane Inn!

Join us on Wednesday, March 20 from 5pm-7pm at The Brisbane Inn, 50 Visitacion Ave, for a mixer and ribbon cutting ceremony as we celebrate the re-opening of a longtime Brisbane business! This is an excellent opportunity to network with local business professionals and community leaders while enjoying refreshments provided by our host. Space is limited! Please RSVP to madison@brisbanechamber.org to reserve your spot!

Brisbane Chamber of Commerce Scholarship Applications Now Available!

Eligible applicants for the Chamber’s program are seniors in high school that live in Brisbane or are a dependent of an employee of the City

of Brisbane or an employee of a Chamber member business in good standing. Applications are available on the Brisbane Chamber of Commerce website (brisbanechamber.org/scholarships) and will be submitted via an online portal.

Applicants must submit their completed application by 5:00 p.m. on April 12, 2024

The Brisbane Inn Grand Re-Opening Party is March 22nd!

Celebrate the Re-opening of the Brisbane Inn on March 22nd from 4-10 pm! Live music starts at 7!

If you travel between San Mateo County and our neighboring counties, the San Mateo County Transportation Authority would like your feedback!

The San Mateo County Transportation Authority (TA) is developing the Regional Transit Connections Plan which will provide guidance for a new grant program. The Regional Transit Connections Program will fund transit improvements that connect San Mateo County with San Francisco, Alameda, and Santa Clara Counties.

The TA would like to learn more about how you travel between San Mateo County and Alameda, San Francisco and Santa Clara Counties. This feedback

will be used to help the TA prioritize which transit projects to fund.

Take the brief survey: <https://www.surveymonkey.com/c/ve7hdm9d>. It will be open until the end of April.

You can also share your thoughts at a virtual community meeting:

Regional Transit Connections Plan - Virtual Community Meeting: April 3, 2024 at 6:00 pm.

- Webinar link: <https://kearnswest.zoom.us/j/88091403365?pwd=bGOHrKb45NlKw64-S1CY6gEpqqQHPg.uZH01dTIpAuGxIlG>

- Dial-In: (833) 548-0276
- Webinar ID: 880 9140 3365
- Passcode: 890636

For more information about the plan, go to <https://www.smcta.com/RTC>.

COMMUNITY ENERGY MEANS MORE AFFORDABLE POWER

BY: GWEN ROSE, DIRECTOR, MARKETING AND COMMUNITY RELATIONS, PENINSULA CLEAN ENERGY, GROSE@PENINSULACLEANENERGY.COM

In January, not long after PG&E introduced a rate increase costing its customers up to \$35 more per month, the Peninsula Clean Energy Board of Directors committed to freeze our electricity rates until at least July.

Like you, we have seen energy costs skyrocket all around us. Higher utility rates mean less money for housing, food, transportation, and other household necessities—especially for families on a fixed or limited income. So we’re doing something about it.

With Peninsula Clean Energy’s 0% rate increase, we estimate that our customers currently save 10% to 15% on electricity costs compared to PG&E. That translates to about \$10-\$20 less per month than if you got your electricity directly from PG&E. Learn more about the rate freeze here: <https://www.peninsulacleanenergy.com/zero-rate-increase/>

Peninsula Clean Energy can provide more affordable electricity because we are a community-led public agency that serves you, our community in San Mateo County and the City of Los Banos. Since we started service in 2016, our customers have saved \$135.9 million compared with what they would have paid to PG&E. Those savings continue to increase.

You can see your electric generation costs by

looking at the summary of energy-related services on your PG&E bill. Energy-related services usually appear as three separate line items: An electric delivery charge, an electric generation charge, and a charge for natural gas service. PG&E delivers electricity and provides natural gas services and so they control those two charges on your bill. If you are our customer, the Peninsula Clean Energy electric generation charge will appear as a separate line item on the bill, replacing what would have been a higher generation charge imposed by PG&E.

If you would like to find other ways to lower your energy bills, we have some tips and other information on the Peninsula Clean Energy website. There you can learn about special rate discounts and energy assistance programs for income-eligible households that can reduce costs and help make homes more energy efficient. You can also discover opportunities just about anyone can use. These include the free HomeIntel service that will analyze your home energy use and make customized recommendations, like replacing old appliances, to save energy. Visit www.peninsulacleanenergy.com/lowerbill to learn more.

Lastly, follow us on [Facebook](#), [YouTube](#), or [LinkedIn](#). Pick the social media of your choice, search “Peninsula Clean Energy,” and click Follow or Subscribe for updates on how we continue to make clean energy more affordable.

ANNUAL BUILDING BENCHMARKING REPORTING PERIOD OPENS AND NEW REQUIREMENTS KICK IN

BY: ADRIENNE ETHERTON, SUSTAINABILITY MANAGER, PUBLIC WORKS DEPARTMENT, AETHERTON@BRISBANECA.ORG

The Brisbane Building Efficiency Program (BBEP) reporting season is now open! Building representatives should receive notification emails instructing them to submit their energy and water benchmarking data by May 15, 2024, through the Energy Star Portfolio Manager reporting link: brisbaneca.org/bbep2023.



The City of Brisbane created the program to help make existing buildings more energy and water efficient. Established by a City ordinance in 2019, the program requires most owners of local buildings 10,000 square feet or more to benchmark their building’s energy and water use and report results annually on May 15th.

The next phase of the program, the “Beyond requirements”, aims to help inefficient buildings improve their energy and water usage and reward high-performing ones. As the first step, properties must demonstrate they are high performance or undergo an audit by June 15. All property types must complete these requirements except those that completed them in 2023.

In the last two years 99+% of buildings completed their Annual Benchmarking requirements, and nine commercial buildings met the Beyond requirements in 2023. City staff are available to support building owners and representatives with meeting their requirements, and violations may be assessed for buildings not making progress towards compliance.

Building owners and representatives that reported last year should find the process simple to continue, but should take note of the following:

- Energy Star Portfolio Manager has made changes to the ID section; please double-check that city-provided UBIDs previously entered are still in place or add them. Brisbane does not have a separate city ID.
- PG&E Benchmarking Portal users should check for duplicate data in April 2023 per an email from PG&E on March 6, 2024.

Information sessions for new requirements will be scheduled this Spring, stay tuned. Learn more and find compliance resources at brisbaneca.org/bbep or contact city staff at bbep@brisbaneca.org or (415) 347-2010.

HOW OUR AFFORDABLE CLEAN ELECTRICITY GETS TO YOU



BUILDING A BRIGHTER FUTURE: BAYLANDS'S JOB TRAINING PROGRAM IS CHANGING LIVES

BY: STEPHANIE SHAKOFSKY, VICE PRESIDENT OF GOVERNMENT AFFAIRS, BAYLANDS DEVELOPMENT, INC., [SSHAKOFSKY@THEBAYLANDS.COM](mailto:sshakofsky@thebaylands.com)



San Mateo County Students at The Baylands Environmental Tech Job Training Program

"For the first time, I have a future and look forward to pursuing a career as an environmental technician and providing a better life for my family," said Jason, a resilient 43-year-old South San Francisco resident with a shoulder disability, who has previously encountered persistent challenges in securing stable employment. "I've floated from one minimum wage job to another my entire life," said Jason.

Similarly, Ahmed, a Tunisian immigrant and father of two young children,

has also found himself navigating tumultuous waters in the wake of the COVID pandemic. With the temporary jobs he had relied on becoming scarce, Ahmed and his family faced the harsh reality of homelessness, seeking refuge in a family shelter. Yet, he remains steadfast in his pursuit of stability. "At the end of the 12-week training program, I am guaranteed a good-paying job that will allow me to provide a home and a better life for my family," Ahmed said.

Their narratives epitomize the transformative impact of the innovative job training partnership among The Baylands, San Mateo's NOVAworks, and San Francisco's Young Community Developers (YCD). As the tuition-free, 12-week job training program concludes its first month, we had the opportunity to catch up with NOVAworks outreach specialist Juanita Pascubello and two program participants to discuss their aspirations for the program. "The program typically costs \$7,000 but is free to qualified participants, and includes direct assistance for transportation and equipment," said Juanita Pascubello. "It's a wonderful opportunity to empower San Mateo County residents with the skills to achieve job sustainability and financial independence."

Funding for this transformative program is made possible by the City of Brisbane's Brownfield Grant, a statewide program designed to incentivize the cleanup of former industrial sites. The Baylands team is grateful for its partnership with the City of Brisbane and the positive impact we are making for San Mateo County residents.

To apply to become a trainee or to learn more about the program, please get in touch with Juana Pascubello at jpascubello@novasanmateo.org or 650-581-0700.

JOIN THE CITY OF BRISBANE'S NEXT FUN ADULT OIL PAINTING CLASS

BY: MICHAEL RODMAN, ADULT OIL PAINTING CLASS INSTRUCTOR, [MICHAEL@RODMANART.COM](mailto:michael@rodmanart.com)

First time painters are welcome! NO experience needed.

The next Adult Oil Painting class starts Thursday March 14, 2024 at:

Mission Blue Center - 475 Mission Blue Dr. Brisbane CA 94005

Details: This class consists of SIX Thursday evenings from 6 to 8:30, starting Thursday, March 14 thru April 18, 2024.

We just added a NEW "4 out of 6" class drop in option.

Beginners: Oil supplies needed for first 3 nights are provided. I teach an easy color mixing class using only 3 primaries + White. Save your money on buying unnecessary expensive tubes of paint. Recommended Supplies list available upon request via email. Questions: email michael@rodmanart.com

For more information, visit: brisbaneca.org/parksrec/page/adult-programs

Class is limited to 8 students only, due to social distancing. ONLY 3 easels left!

This class is designed for beginning oil painters and emerging artists that want to try their hand at oil painting. Gone are the days of smelly oil paints as manufacturers now offer Solvent Free thinners and Cadmium Free paints.

I hope you can join our FUN oil painting class!



NOW ACCEPTING SCHOLARSHIP APPLICATIONS!

BY: MADISON DAVIS, PRESIDENT AND CEO, BRISBANE CHAMBER OF COMMERCE, MADISON@BRISBANECHAMBER.ORG, 415-706-5276

For 28 years, the Brisbane Chamber of Commerce has awarded scholarships to students. Our scholarship funds from event revenue, donations from Christmas Stars, and the generous support of several Chamber businesses located both in and outside of Brisbane. If you or your business would like to contribute to the Chamber's 2024 Scholarship Fund, please email Madison@brisbanechamber.org

Eligible applicants for the Chamber's program are seniors in high school that live in Brisbane or are a dependent of an employee of the City of Brisbane or an employee of a Chamber member business in good standing. Applications are available on the Brisbane Chamber of Commerce website (brisbanechamber.org/scholarships). Applications will be submitted via an online portal.

Applicants must submit their completed application by 5:00 p.m. on April 12, 2024

The Brisbane Chamber of Commerce Scholarship Committee matches award criteria to the information that students provide in the application. In evaluating and selecting students that will be awarded grants, the committee will consider the following areas:

- Scholastic Record (3.0 GPA or above required)
- Participation in Extracurricular Activities
- Financial Need
- Letters of Recommendation
- Acceptance into an accredited institution

After reviewing the applications, finalists will be selected to participate in an interview with the Chamber's Scholarship Committee and will be notified two weeks after the close of the application window. Interviews will be conducted via Zoom. Once all interviews have concluded, a member of the chamber

will notify students if they have been selected for a scholarship. Communication will be made in late May. Students will be recognized at the Chamber's Excellence in Education ceremony in early June.



Garden Chapel
Funeral Directors
FD-805
Veteran Owned

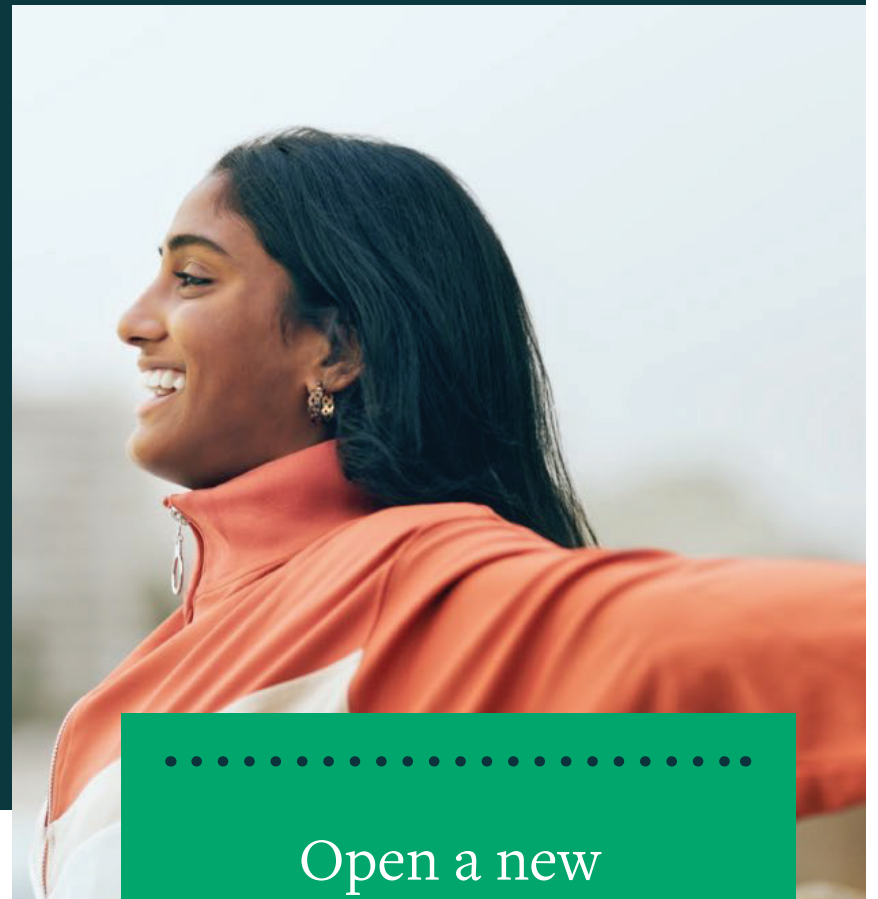
"Here to support & guide your Family through the most difficult time."

885 El Camino Real
South San Francisco
650-583-2510
www.gardenchapel885.com



Formerly San Mateo Credit Union

Here is a nice chunk of change.



Open a new Premium Checking account by April 30 and earn up to a \$150 CASH BONUS*

Turn spending into earning.

Get a checking account that pays. Open a Premium Checking account through April 30. Earn \$50 for each of these requirements in the first calendar month after opening:

- Make 10 or more debit card transactions monthly.
• Have at least one monthly direct deposit, payroll deposit, or ACH transfer.
• Select to receive eStatements.

Achieve all three and enjoy a \$150 cash bonus!

What a difference a day makes!

Enroll in direct deposit and receive your payroll deposit one day sooner.

BANKING. LENDING. INVESTING IN YOU

Get started by scanning or visiting monterra.org/checking150



*To earn a \$50 cash bonus for each requirement, open a new Monterra Credit Union Premium Checking account and complete the following steps within the full calendar month following after account opening: Make 10 or more debit card transactions monthly, have at least one (1) monthly direct deposit, payroll deposit or external ACH transfer and select to receive eStatements. For joint accounts, combined purchases and payments from multiple debit cards will count toward the requirement. Offer not available for existing Monterra members with an open Premium Checking account as of 2/25/24. Limit one bonus eligible checking account per individual membership. Cash bonus will be paid within 31 days after the qualification period ends and the account must have a positive balance at payout. Monterra will classify the bonus as interest. Any applicable taxes are the account holder's responsibility. **APY = Annual Percentage Yield. Rate effective as of 2/25/24. APY paid on daily balances if monthly requirements are met: 10 or more debit card purchases, one (1) direct deposit selecting to receive eStatements monthly. If requirements are not met the APY will be 0%. Limit one (1) Premium Checking account per membership. Rates subject to change. Offer may change without notice. Conditions and restrictions apply. Federally insured by NCUA. ©2024. Monterra Credit Union