



THE LUMINARY

Brisbane's Business and Community Journal

27 YEARS OF SCHOLARSHIPS

By: MARY SHULENBERGER, Board Member, Brisbane Chamber of Commerce, Parle Enterprises

What's Inside..... Page

Blast From Brisbane's Past2

Brisbane Business Bulletin6

Trash Talk-Handling Large Items and Overflow6

Roundhouse Park at the Baylands.....7

2023 Brisbane School District Outstanding Students.7

The Brisbane Chamber of Commerce Excellence in Education Program started in 1996 with three awardees and \$4000 in grants. Since that time the program has made 263 grants totaling \$323,000 (including this year). The chamber awarded \$8,600 to graduating high school seniors at our annual ceremony on June 13 at Brisbane City Hall. Eligible recipients are those who are graduating high school and are Brisbane residents or the dependents of employees working for a business with an active Brisbane Chamber of Commerce membership, and who have earned a 3.0 GPA or higher.



From left to right: William Wilder-Smith, Abbey Connolley, Avalon Ibarra, Gavin Wang, Kayhan Kolhatkar. Not pictured: Benjamin Johnson

Our donors this year who contributed to the scholarship fund include: **Baylands Development Inc, Integrated Resources Group, South San Francisco Scavenger Company, Golden State Lumber, Recology, Bill Barulich, Peninsula Clean Energy, BiRite, and Jason Cranston. Our scholarship ceremony sponsor was Golden State Lumber.**

Our Scholarship Committee included Freddy Beaman from US Bank, Teresa Montgomery from South San Francisco Scavenger, Cristian Cabrera from J Style at Home, and Tamara Palmer Heath, Brisbane resident and Chamber Treasurer. They thoughtfully reviewed all applications and interviewed students.

The Brisbane School District also participated in the ceremony, recognizing outstanding students from Brisbane Elementary School, Panorama Elementary School, and Lipman Middle School as well as an educator of the year. Students recognized by the Brisbane School District are chosen by their teachers.

Rich Borghello of Recology and Brisbane Chamber Board Member served as the keynote speaker and gave our scholars advice about finding their path in life, being open to new opportunities, and giving back to the community.

Here were this year's Excellence in Education award recipients:

Kayhan Kolhatkar, a resident of Brisbane, attended Westmoor High School. He has compiled a 4.33 GPA Kayhan takes his education seriously and has participated in UC Berkeley's Summer Scholars Program and Precalculus and Trigonometry classes at City College of San Francisco. He was a member of the Westmoor Robotics Club and played on the Varsity Badminton team. Kayhan plans to attend UC Berkeley in the fall, majoring in Planetary Sciences and hopes to pursue a master's in Astrophysics. Kayhan is keen to prove once and for all, that there is life beyond Earth.

William Wilder-Smith is a resident of Pacifica and attended Terra Nova High School where he earned a 3.66 GPA and a spot on the Principal's List. William is an athlete, participating in Varsity Football, Soccer, and Track Field. He earned the most valuable player award for his soccer team in 2022 and was put on the Peninsula Athletic League "All League Team" for football and soccer. William's Economic and Government teacher Mr. Krupp says this of William, "It may seem like a minor concept, but William is the consummate gentlemen. He is the only student who walks up to my desk every afternoon and shakes my hand. He is a deeply respectful individual. In the fall,

William plans to attend Skyline College and study Physical Education. Eventually, he envisions having a career as a firefighter.

Benjamin Johnson, a resident of Brisbane, attended San Francisco University High School, where he compiled a 3.74 GPA. In his spare time Benjamin founded and lead the Family Matters Affinity Space and Co-lead the Jewish Affinity Space, working diligently to make University High School a more inclusive space. He played Varsity soccer and Badminton and was a peer advisor to freshman and sophomore students. Benjamin has been employed as a barista at Happy Lemon and as a Mission Blue Camp group leader. In the fall Benjamin plans to attend Pitzer and has an interest in Biology and studio art. He plans to pursue an advanced medical degree in the future.

Gavin Wang, a Brisbane resident, attended Serra High School and earned a 4.17 GPA. Gavin played on the Varsity Water Polo and Swim Team, served as the Co-President of the Future Aviators Club, and the Secretary of the National Honors Society at Serra High School. He has received a number of awards from his school, including the Math and Science Faculty Award, Leadership Award, and Christian Service Award. In his free time, Gavin works as a Lifeguard for the City of Brisbane and Serra High School. He also enjoys Landscape and Food Photography and has built a website and portfolio to showcase his work. In the fall, Gavin plans to attend UC Santa Cruz and major in Electrical Engineering. He hopes to one day follow in his father's footsteps and become a pilot or work for a tech company.

Abbey Connolley, a Brisbane resident, attended Sacred Heart Cathedral Prep and compiled a 4.3 GPA. Abbey played on the Varsity Tennis team and founded a clothing and shoe drive called Kicks for Kids. She also served as the Volunteer Activities Lead for First Lutheran Church. She has received the Academic Excellence Award for History in 2019 and 2020 and is a member of the California Scholarship Federation. She works as a barista at Madhouse Coffee and as an intern for the author of children's book series, Catch the Cuteness. In the fall, Abbey will attend UC Davis and major in Animal Science. She hopes to one day become a veterinarian.

Avalon Ibarra, another Brisbane resident, attended Jefferson High School and earned a 3.5 GPA. Avalon

>> CONTINUED ON PAGE 2



MAYOR'S Message

MAYOR'S MINIS

By: MADISON DAVIS, City of Brisbane Mayor, madisondavis@brisbaneca.org, 415-706-5276

This month I'm trying something new. Instead of dedicating a whole article to one topic, I thought I would give mini updates on several city topics, hence the title of this article. Catchy, no?

Storm Drains & Budget

While we washed away the mud, the infamous New Year's Eve storm still impacts us. Assessment of our storm drains revealed significant debris from the bomb cyclone, such as mud and rocks. Why is this significant? Should the city face another large storm, the storm drains are ill-equipped to handle the oncoming of more debris which could lead

>> CONTINUED ON PAGE 2



SUPERVISOR'S Message

SAN MATEO COUNTY ADOPTS \$7.7 BILLION TWO-YEAR BUDGET

By: DAVID J. CANEPA, President of the San Mateo County Supervisors, dcanepa@smcgov.org, 650-363-4572

The Board of Supervisors approved a \$7.7 billion two-year spending plan June 28 after three days of budget hearings that focuses on ending homelessness, emergency preparation and equity.

We have a balanced budget today but in just three years our finance experts are projecting a looming deficit. This budget shows the prudent financial stewardship we have taken to address our current safety-net needs while preparing for

>> CONTINUED ON PAGE 3

BRISBANE CHAMBER OF COMMERCE
50 PARK PLACE, BRISBANE, CA 94005
415-467-7283
BRISBANE4BUSINESS@BRISBANECHAMBER.ORG

*****ECRWSEDDM****
POSTAL CUSTOMER
BRISBANE, CA 94005

PRESORTED STANDARD
U.S. POSTAGE PAID
SAN FRANCISCO, CA
PERMIT NO. 80

CHAMBER CIRCLE MEMBERS

- Baylands Development Inc
- BiRite Foodservice Distributors
- City of Brisbane
- Golden State Lumber
- Homewood Suites
- Integrated Resources Group
- Lyon Medical Construction

- Peninsula Clean Energy
- Recology
- South San Francisco Scavenger Co., Inc.

The Chamber Circle is a special group of members that have committed to support the Brisbane Chamber of Commerce through sponsorships.

If your business would like to become a member of the Chamber's Circle, please contact Madison Davis, President/CEO at 415-467-7283 or e-mail madison@brisbanechamber.org.

Scholarships, continued from page 1

participated in Varsity Soccer and is employed as a Lifeguard for the City of Brisbane. She also served on Brisbane's Youth Advisory Committee. In 2022 she was recognized for having the most service hours in her grade. In the fall Avalon will attend San Francisco State University where she will major in Interior Architecture. She hopes to pursue a career in design, helping clients decorate their homes according to their vision.

The Brisbane Chamber applauds our 2023 Excellence in Education award recipients and wishes them the best in their higher education endeavors.

Mayor's Message, continued from page 1

to catastrophic flooding throughout town. We must clear out the drains in the summer when we are afforded predictably mild weather in

preparation for the winter rains.



Picture of a Brisbane storm drain, depicting debris that need removal

The cost of such an endeavor? \$1.7 million. Couple this amount with a projected \$1.9 million budget deficit, not including the work to clear out the drains, and the city is in a tight spot financially. The city council directed staff to create a list of expenditures to delay for six months when we can conduct a mid year budget review. At that time, we will better understand how the city fares financially and can move forward with items on the hold list if possible. Roughly \$500,000 worth of expenditures are on the list. While we would love to spend money on new programs and projects or enhancements to city facilities, we can't afford it right now. We must focus on necessary expenses and maintaining existing infrastructure.

Thankfully, the city budgets conservatively, and we usually fare much better than anticipated. When we get closer to the end of the year, we can review our capital improvement list and add one time projects if money is available. While we must fork over the \$1.7 million to clean our drains, we can apply for reimbursement from other agencies such as FEMA and the county. Staff is confident we will be reimbursed for some if not all of the money, but that could take a year or two.

Vegetation Fire

While the fog may have disguised the smoke, a fire broke out on the afternoon of July 7 at 100 W Hill Drive. Nine fire companies, four chief officers, and a fire investigator responded. According to North County Fire Authority, the first arriving fire company on the scene reported a large spot of grass burning at a slow rate of spread upslope and with the wind pushing the fire. Additional fire companies arrived and aggressively attacked the fire with hose lays, stopping the spread at approximately 4 acres of vegetation. Fire companies fully contained the incident in about four hours. The fire did not threaten any structures, nor were any evacuation warnings ordered. No firefighters or the public were injured, and the cause of the fire is under investigation by the North County Fire Authority Fire Prevention Services Division, Investigation Section.

Visitacion Avenue Repaving

Potholes on Visitacion require us to repave this summer. A contractor will grind the existing pavement down 2 inches and place 2 inches of new asphalt concrete from San Francisco Avenue to San Benito. The contractor will also reapply all existing striping in the current locations.

Prop 68 Per Capita Grant funding to replace Community Park Playground Surfacing

The Per Capita grant funding program originates from Proposition 68, approved by California voters in 2018. The State appropriated funds for the program, and in 2020, the Brisbane City Council adopted a resolution authorizing an application for per capita grant funds generated by Proposition 68. Projects must be for recreational purposes, and recipients are encouraged to utilize grant funds to rehabilitate existing infrastructure. The City applied to replace the playground surfacing at the

BLAST FROM BRISBANE'S PAST

The following article is taken from *The Brisbane News Bulletin*, a Brisbane Chamber of Commerce newspaper printed on April 15, 1949. We suspect the article originally ran in another local paper and the Chamber decided to feature it.

Peninsula Pickings

By: Barry Glick

Know They Neighbor

I don't remember whether this sage advice came from the Bible or from Abdallah Ibn Yasin when he founded the empire of the Almoravides. However, I have one specific neighbor in mind for the people of this Peninsula area to know. I refer to the little neighboring community known as Brisbane.

Yesterday marked the first time in all my years on the Peninsula that I visited Brisbane. It was in a heavy downpour that I got my first glimpse of Brisbane and two comparative thoughts came to my mind. One was, "This is just like a scene from a western movie." The second was, "Here before me is an exact, picturesque duplicate of Sonora, the historical mining town in the heart of the fabulous Mother Lode country." But, I'm getting ahead of myself chronologically.

Many of you have come within three blocks of Brisbane without ever seeing more than a few of its homes perched in the upper hills area, as you swept along the Bayshore Highway, so follow me on this word sightseeing trip, then see it for yourself the next time you go for a leisure ride.

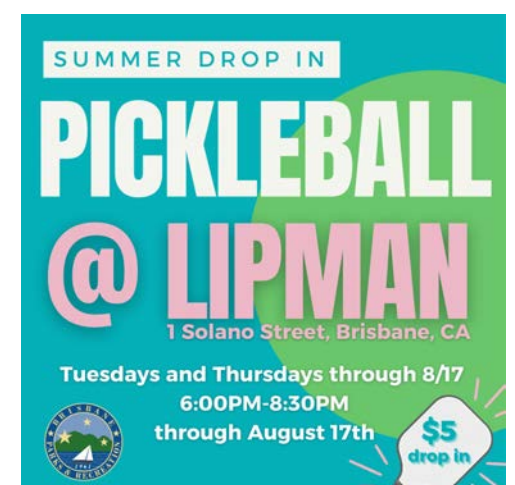
Ten miles north of Burlingame turn left off the highway into a cut in the lofty hills. You'll traverse a half circle a distance of approximately three blocks and before your eyes will unfold the most picturesque, the most novel community on the Peninsula.

You are now on Visitacion Ave, the business section, comprising four long blocks on an incline.

You'll see Buffalo Billy's Bootery, the Sweet Shop, The Fountain of Youth where the youngsters congregate for Cokes, Dick's Tower where the oldsters congregate for something else besides Coke, the 23 Club, a name dating back years when "23 skidoo kid," was the popular saying. You'll note the little Brisbane theatre where Edward G. Robinson is currently starring in "Night Has A Thousand Eyes."

You'll see the locally owned Five and Dime store housed in a realty tract office; you'll note the spacious ground floor office of Dr. Fred H. H. Lawrence, and you'll note, among other things the absence of chain stores. You'll also take note of V.V. Gilman's Drug Store which is also an information center.

Of all these various places, one will seem to stick in your mind—Dick's Tower, because of the raids of gambling violations. But, the good folks of Brisbane like to have visitors know that Dick's Tower is overshadowed by the fact that the little community of 4500 men, women, and children give fine support to four churches. Incidentally, talking about children, there are 420 of 'em attending Brisbane Elementary School. Here, a teaching staff of 13 is headed by



>> CONTINUED ON PAGE 7



2023 Board of Directors

Chairperson of the Board
Daniel Carter
Lyon Medical Construction

Vice Chair of the Board
Sue Cochran
Cochran Construction

Secretary of the Board
Teresa Montgomery
SSF Scavenger Company, Inc.n

Treasurer of the Board
Tamara Heath

Members of the Board

Freddy Beaman
US Bank

Rich Borghello
Recology

Cristian Cabrera
J Style at Home

Dilmohan S. Chadha
Integrated Resources Group, Inc.

Jason Cranston
JLL

Mary Shulenberger
Parle Enterprises

Jennifer Wilder-Smith
BiRite Foodservice Distributors

Andy Lopez
Golden State Lumber

President and CEO
Publisher/Editor of the Luminary
Madison Davis
(415) 467-7283
madison@brisbanechamber.org

Luminary Layout by
Christine Deyto
(415) 216-7044
cdeyto@gmail.com

Published by the Brisbane Chamber of Commerce
50 Park Place, Second Floor
Brisbane, CA 94005
(415) 467-7283

website: www.brisbanechamber.org

Facebook.com/brisbanechamberofcommerce

Deadline for Articles and Advertisements:
2nd Wednesday of each month

E-mail your article, advertisement or questions
madison@brisbanechamber.org (415) 467-7283.

Advertisements are interactive on the Luminary
posted to the web and on social media.

Mission Statement: The purpose of the Brisbane Chamber of Commerce is to create an atmosphere in which business prospers and the community thrives.

The Luminary is printed using recycled paper
and environmentally-friendly soy-based ink.

JUST SOLD!



**304 Klamath Street
Brisbane**

Sold for:
\$1,095,000

JUST SOLD!

**340 Kings Road
Brisbane**

Sold for:
\$1,398,000



Represented Buyer

JUST SOLD!



**202 Glen Park Way
Brisbane**

Sold for:
\$1,308,000



I'm Celebrating!

On July 15th, I will have been a Realtor® for 30 years! Thank you so much to all of my loyal customers for supporting me in my business and referring your friends and relatives to me!

Kathy Wall

PENDING SALE!



**401 Dellbrook Avenue
San Francisco**

Listed for:
\$1,395,000

* Representing Buyer

COMING SOON!

**209 East Crystal Cove
San Francisco**

Listed for:
\$1,018,888



JUST SOLD!



**45 Joy Avenue, #D
Brisbane**

Sold for:
\$715,000

THINKING OF BUYING OR SELLING A HOME? GIVE US A CALL!



Kathy Wall & Mike Darling
REALTORS®
(415) 608-4168
KathyWallRealEstate@yahoo.com




A Berkshire Hathaway Affiliate
DRE# 01163766 | DRE# 01267936

Natalie Lipman as superintendent and Lois Barry as principal.

But let's get on with our travelogue. Few communities in California, unlike Brisbane, can point to the fact that no through traffic is possible. Brisbane is situated in a semi-circular hillside, its streets winding in tier formation.

Even the most foolhardy refrains from going other than second gear on most of the thoroughfares.

But, as stated before its natural hill barriers preclude through traffic. There's law in Brisbane, as symbolized by Dan Case, district police officer. He likewise has his citizen aides. But, traffic violators are almost minus, Brisbane boasts a somewhat free and easy existence. Practically all of the community's bread winners have employment in San Francisco-South San Francisco-Daly City area.

The gals in their slacks and bandanas are likewise part of the scenery. I noted some very attractive ones there yesterday.

Supervisor's Message, continued from page 1

uncertain economic conditions at the state and federal level.

Guided by priorities set by the Board of Supervisors, the blueprint emphasizes investments in sustaining initiatives, not launching new programs. These include:

Ending homelessness through investments not only in shelters and affordable housing but counseling services, job training and rental assistance.

Supporting children and families by addressing housing needs for vulnerable families and renewed investments in childhood literacy and foster youth.

Updating emergency response protocols and protecting communities by targeting investments in preparation and planning for wildfires, flooding, earthquakes and other disasters.

Ensuring staff are trained to design and deliver services that advance equity – to work intentionally to include communities that have historically been underserved.

The recommended budget would add 120 new positions – primarily in health services -- for a total of 5,768 positions for all County funds in Fiscal Year 2023-24.

In other news, I'm pleased to announce Sutter Health plans to reopen the Mickelson Arthritis and Rehabilitation Center therapy pool in San Mateo in early summer 2024 two years ahead of schedule.

Sutter had announced after the pandemic started in 2020 that the pool would be permanently closed.

Sutter planned to permanently close this pool and said it would never open again. But we fought hard and this shows the power of our community when we come together to fight for the public's health.

Lindsay Raike (pronounced rike like bike), CEO of nonprofit advocacy group Warm Water Wellness, coordinated the grassroots effort with the support of my office.

Mickelson is the only facility in San Mateo County that provides a wheelchair-accessible warm pool specifically designed for therapeutic use by seniors, adults and children with chronic pain or disabilities, patients recovering from surgery, pregnant women, and others who find the warm water healing. The \$4 million pool opened 25 years ago and financed entirely by community donations, including \$1.5 million from the late philanthropist Mack E. Mickelson. Plaques on the pool wall also showcase names of donors.



Pancake Breakfast!
SUNDAY, SEPTEMBER 10th

Mission Blue Nursery
3435 Bayshore Blvd, Brisbane, CA 94005

Breakfast Fundraiser: 9am-12pm
Native Plant Sale: 9am-2pm

Entry to plant sale is FREE!
Pancake breakfast tickets available at the door or at
www.mountainwatch.org/pancakebreakfast2023




\$20 ADULT **ADMIT ONE**
\$15 KID **ADMIT ONE**



PANCAKES FOR YOUR BELLY, PLANTS FOR YOUR BACKYARD!



Garden Chapel
Funeral Directors
FD-805
Veteran Owned

"Here to support & guide your Family through the most difficult time."

885 El Camino Real
South San Francisco
650-583-2510
www.gardenchapel885.com

San Francisco Office
580 4th Street



Brisbane Office
400 Visitacion Ave

NAVIGATING THE REAL ESTATE MARKET WITH YOU!

WITH OVER 54 YEARS OF COMBINED EXPERIENCE, WE DELIVER IN ANY HOUSING CLIMATE. OUR PROVEN SALES SUCCESS RATE, LOCAL MARKET EXPERTISE, AND STRESS-FREE PROPERTY PREPARATION STRATEGY, ARE WHAT MAKE US THE MOST-TRUSTED REAL ESTATE TEAM IN BRISBANE. WHO YOU WORK WITH MATTERS.

FOR SALE: \$1,498,000



Listed by Ron Davis
3430 Longview Dr, San Bruno
3 bd| 2 bth| 1870 sq ft Home

FOR SALE: \$895,000



Listed by Michele Jauregui
4250 El Camino Real D138, Palo Alto
2 bd| 1 bth| 885 sq ft Condo

SOLD! \$1,800,000



Michele Jauregui Represented Buyer
269 Kings Rd, Brisbane
3 bd| 3.5 bth| 2500 sq ft Home

COMING SOON! \$1,098,000



Brisbane
2 Bedroom, 2 Bathroom Home
Coming Soon!

Listed by Ron Davis
Santa Clara St, Brisbane
2 bd| 2 bth| Home

SOLD! \$1,800,000



Listed by Ron Davis
269 Kings Rd, Brisbane
3 bd| 3.5 bth| 2500 sq ft Home

LEASED! \$8000/month



Listed by Michele Jauregui
524 Klamath St, Brisbane
5 bd| 3 bth| 3402 sq ft Home

Thinking about Buying or Selling? Call us Today!
We offer complimentary professional staging when you list with us!
For more information visit VoyageRealEstateBrisbane.com

JAMES BALL

Realtor
DRE #01975342

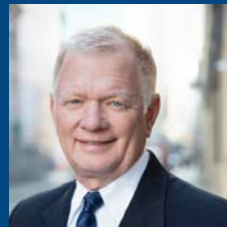
415-309-5281
james@voyagerealestatesf.com



RON DAVIS

Broker, GRI
DRE #00961181

415-846-3077
ron@voyagerealestatesf.com



MICHELE JAUREGUI

Realtor
DRE #01801514

415-516-1977
michele@voyagerealestatesf.com



Jason Cranston
Managing Director
Commercial Real Estate Brokerage
Advisory & Transaction Services
Lic. #01253892

Jones Lang LaSalle Brokerage, Inc.
4085 Campbell Avenue, Suite 150
Menlo Park, CA 94025
T +1 650 480 2100 M +1 650 333 5173
jason.cranston@am.jll.com



★ **MIDTOWN MARKET**

✓ **WE ARE OPEN** ★
TO SERVE THE COMMUNITY

Open Every Day 6:00am-12:00am Year Round

Groceries, Bakery, Produce,
Dairy, Cheese, Deli, Coffee, Tea,
Sundries, Flowers, Liquor, Wine, and Beer ★

★ **249 Visitacion Avenue**
Brisbane, CA 94005

(415) 467-1424

Our Community Is At The Heart of Everything We Do.



JASAMA PATEL

SENIOR MORTGAGE LOAN CONSULTANT
SILICON VALLEY CAPITAL FUNDING

THERE'S MORE TO BUYING A HOME THAN JUST INTEREST RATES.
I CAN HELP GET YOU PRE-APPROVED IN ANY MARKET, AT NO COST.

☎ 650-438-2133
✉ JAS@JASAMAPATELLOANS.COM
🌐 WWW.JASAMAPATELLOANS.COM
📍 6090 HELLYER AVE #100, SAN JOSE

RESIDENTIAL AND COMMERCIAL LENDING - CASH OUT-PRIVATE MONEY-
PURCHASE - REFINANCE - EQUITY LINE- SMALL BUSINESS LOANS- LOT &
CONSTRUCTION LOANS- HARD MONEY-REVERSE MORTGAGE-NICHE
LENDING OPTIONS- BANK STATEMENT LOANS- STATED INCOME LOANS

BRISBANE RESIDENT & BRISBANE LION

BRE# 02024680 NMLS# 1418124

ADVERTISE WITH US

To learn more about advertising in The Luminary, email Madison Davis at madison@brisbanechamber.org



JOEL DIAZ
REAL ESTATE TEAM

Local Expertise
Trusted Advisor
General Contractor
Real Estate Developer



JOEL DIAZ | (650) 520-7483
REALTOR® #01336882

View our photos and virtual tours here: www.BrisbaneCA.com

NATIONAL TOP PRODUCER

COMING SOON



San Francisco - Fixer
\$698,000 - Call for details!

FOR SALE



36-50 San Bruno Ave | Vacant Lot - Brisbane
Listed at: \$1,998,000

SOLD



19 Visitacion Ave - Brisbane
Sold in 2 weeks - \$250K OVER ASKING!
Sold at: \$1,250,000

SOLD



280 San Benito Rd - Brisbane
5 BED/ 3 BATH 1,812 Sq.Ft.
Sold at: \$1,608,000

WE HAVE OFF MARKET LISTINGS
- Call for details!

COMING SOON - BRISBANE:
Totally Remodeled Luxury Home with Panoramic - must see - views!
- Call for details!

SOLD



141 Elderberry Lane - The Ridge - Brisbane
4 BED/ 3 BATH 2,909 Sq. Ft.
Sold at: \$2,300,000

Over 25 Years of Construction & Real Estate Development Experience *Call us today!*

THINKING OF SELLING? WE OFFER COMPLIMENTARY STAGING AND HOME PREPARATION WHEN YOU LIST WITH US!
想出售你的房產嗎？請致電讓交易成功的產經紀和公司！我們提供專業的上市準備和裝飾工作。謝謝！



THE BAY LANDS

Explore News & Project Updates

www.thebaylands.com

IRG SURFACES SELECTION SERVICE
www.marblecompany.com

Natural Stone • Quartz • Porcelain • Tile



Call us today to schedule a visit!

Brisbane Showroom
275 Valley Drive,
Brisbane, CA 94005
415-657-0280

J Style at Home Inc. 

www.jstyleathome.com

Custom Design and Cabinets that fit your life style...
Dedicated Professionals that meet your Scope, Schedule and Budget!

3890 Bayshore Blvd, Brisbane CA 94005 DIRECT 415 / 494 5661
EMAIL customer-service@jstyleathome.com FAX 415 / 494 5864
California Contractor Lic. 963554

BiRITE FOODSERVICE DISTRIBUTORS

Family Owned // **Locally Sourced**

BiRite is a third generation, broadline foodservice distributor that is proud to service restaurants, hotels, caterers, and universities throughout the greater Bay Area.

415.656.0187 www.birite.com

FOLLOW US! 

BRISBANE BUSINESS BULLETIN

“The Brisbane Business Bulletin” allows Brisbane Chamber of Commerce members to communicate brief bits of news to the public such as change of hours, new product offerings, upcoming events, etc. If you are interested in listing a news item next month, please contact Madison Davis at madison@brisbanechamber.org

No Chamber Mixers in July & August

The chamber has noticed reduced turn out for mixers in July and August as many people are out of town. Mixers will resume in September. Have a great summer!

San Bruno Mountain Watch Pancake Breakfast

San Bruno Mountain Watch presents the annual Pancake Breakfast Fundraiser on Sunday, September 10th. Please join a morning of food, friends, and fun supporting their nursery, education, and ecological restoration programs. Enjoy delicious blueberry pancakes, sausages (veg non veg), fruit, and coffee from 9am to 12pm. Mission Blue Nursery will be open and selling native plants at the event from 9am to 2pm. More info: <https://www.mountainwatch.org/pancakebreakfast2023>

Dark Skies Ordinance

Brisbane’s Open Space and Ecology Committee is working with sustainability and planning staff to develop a proposed Dark Skies Ordinance that would help protect the nocturnal environment as well as community health and enjoyment of the night sky through reasonable limits on outdoor lighting. Look out for opportunities to weigh in on the proposal in the coming months!

Water and Sewer Rate Change

At the April 20th City Council Meeting, the Council voted unanimously to approve Resolution 2023-17, increasing the charges for water and sewer services and setting the discount rate for the City’s low income rate assistance (LIRA) plan at 25% for all services. The new rates go into effect June 15th so customers will see the change on their August bill (which captures the June 15-August 15 billing cycle). Learn if you qualify for LIRA at brisbaneca.org/lira or the State’s Low Income Water Assistance Program (LIWAP) at csd.ca.gov/waterbill.

Doing some work on your property and want to speak with a City Planner?

A Planner is available Mondays and Thursdays during City Hall’s Public Walk-In Hours: M, Tu, Th: 9-4, W: 9-7, F: 9-12. Planners are also available virtually by appointment on Tuesdays, Wednesdays, and Fridays. Book your appointment here: brisbaneca.org/planner.

Summer Concerts in the Park Series Lineup Announced

The Brisbane Parks and Recreation Commission and Parks and Recreation Department have offered a summer concert series at our Community Park for more than a decade. It has become a summer staple for many residents, and we certainly appreciate the community support as reflected in both event attendance and sponsorships. This year the series will be held on select Fridays in July and select Sundays in August.

2023 Concerts in the Park line up:

Friday, 7/21 6PM DJ Sharon (sponsored by Lion’s Club)

Friday, 7/28 6PM Livewire Band

Sunday, 8/6 2PM Local Brisbane Bands

Sunday, 8/13 2PM Houserockers

TRASH TALK-HANDLING LARGE ITEMS AND OVERFLOW

By: TERESA MONTGOMERY, Chamber Board Member and Sustainability Manager at SSF Scavenger, and ADRIENNE ETHELTON, Sustainability Manager at City of Brisbane

Everyone can help keep our community clean by disposing of unwanted items responsibly. Sorting waste items into the correct cart is essential-- so is keeping your cart lids fully closed.

Do you know how to dispose of large items and overflow correctly? Please take the following quiz to find out:

1. Large items like sofas, desks, exercise machines, major appliance (refrigerators, washers, dryers, dishwashers), children’s play equipment (outdoor slides, playhouses, wagons) and other items that will not fit or are not allowed in your waste carts:

- A. Can often be sold or donated if in good condition. NextDoor and Facebook are two of many possible places to post online, Goodwill and Salvation Army are two of many possible charities that might be able to assist.
- B. Can be picked up by SSF Scavenger through the On-Call Cleanup Program or via special collection. An appointment is required. Fees may apply.
- C. Can be self-hauled to Blue Line Transfer. Fees will apply.
- D. All of the above.

2. Overflow garbage:

- A. Can be bagged, set next to your grey garbage cart, and collected on your regular collection day. An appointment is required. Extra bag fees apply.
- B. Can be picked up by SSF Scavenger through the On-Call Cleanup Program. No charge to eligible residents. Limits apply.
- C. Can be self-hauled to Blue Line Transfer. Fees will apply.
- D. All of the above.

3. Overflow recycling:

- A. Can be placed in paper bags, set next to your blue recycling cart, and collected on your regular collection day. Clean/dry paper must be bagged separately from empty recyclable containers. Cardboard should be flattened and bundled; not need to bag. No appointment is necessary. Collection is free of charge.
- B. Can be picked up by SSF Scavenger through the On-Call Cleanup Program.
- C. Can be self-hauled to Blue Line Transfer. Fees will apply.
- D. A and C only.

4. Overflow yard waste:

- A. Can be placed in paper bags, boxes, or reusable cans, set next to your green

organics cart, and collected on your regular collection day. No prior arrangement is necessary. Collection is free of charge.

- B. Can be picked up by SSF Scavenger through the On-Call Cleanup Program.
- C. Can be self-hauled to Blue Line Transfer. Fees will apply.
- D. A and C only.

Answers:

1. D. All of the above.
2. D. All of the above.
3. D. A and C only. The On-Call Cleanup is not for materials that belong in your blue and green carts.
4. D. A and C only. The On-Call Cleanup is not for materials that belong in your blue and green carts.

Please visit ssfscavenger.com, call 650.589.4020, or email info@ssfscavenger.com for more information on the On-Call Cleanup Program, special collections, and Blue Line Transfer.

The Cart Family has their limits.

I’m way too full!

Please do not overload or stuff large items into your waste collection carts. Doing so can create a mess and cause service delays. Call 650.589.4020 to arrange for a special collection or, bring your items to Blue Line Transfer. Charges may apply.



Please scan me to learn more about Blue Line Transfer!



An important message from



SOUTH SAN FRANCISCO

SCAVENGER

— COMPANY, INC. —

Mayor's Message, continued from page 2

Community Park. The State issued the grant in 2021, requiring a 20% match by the City.

This Fall, Park and Recreation staff will work with a contractor to overhaul the existing poured in place surfacing at the playground because it is in poor and rapidly deteriorating condition. Despite past efforts to patch areas as they have failed over the years, the playground surfacing requires a complete replacement. This project will include excavation of the old material, removal of the adjacent sand area, site preparation, and installation of new surfacing. We anticipate that the playground will be closed for two weeks. The community will receive notices of the closure in advance. This work will mitigate potential risks and improve overall safety.

Replacement of the Pool's Water Heater

The existing boiler for the community pool is nearing the end of its useful life. The boiler is also one of our largest mechanical users of fossil fuel. Based on a cooperative 2018 Zero Net Energy Study with the Bay Area Renewable Energy Network, the City identified funding opportunities to replace the boiler with electric heat pump water heaters (EH Ps). The city council approved a cutting edge design build contract with Willdan Energy Solutions (WES) on July 7, 2022. The contract with WES includes their role as designer, contractor, and facilitator of city applications to external funding agencies. The City anticipates receiving funding from The California Energy Commission Energy Conservation Act (\$375,000) Measure K funds from Supervisor Canepa (\$200,000), PG&E GK12 Energy Efficiency Incentive (\$285,000) and Peninsula Clean Energy Electrical Incentive Upgrade (\$318,000). With these funding sources and over \$450,000 or more in projected energy cost savings, the city anticipates only spending \$118,000 from the General Fund.

I hope you are all enjoying your summer! For additional information about items in this article or other concerns, please email me at madisondavis@brisbaneca.org or call me at 415-706-5276.

BRISBANE School District News**2023 BRISBANE SCHOOL DISTRICT OUTSTANDING STUDENTS OF THE YEAR AWARDS**

By: **RONAN COLLVER**, Brisbane School District Superintendent, rcollver@brisbanesd.org

In collaboration with the Brisbane Chamber of Commerce, the following students received Outstanding Student Awards this year at the Excellence in Education Ceremony held at Brisbane City Hall on June 13. Students are chosen to receive the award by their teachers.

Brisbane Elementary School honored Lexie Thompson and Brandon Ormbrek.

Lexie Thompson - Kind, thoughtful, athletic, and outgoing are a few words that describe Lexie Thompson. This year she was honored as an Outstanding Student of the Year for the wonderful ways she utilizes Lifeskills day in and day out. She is an exemplary student both in and out of the classroom. We wish her the best of luck as she begins a new journey in San Diego with her family.

Brandon Ormbrek - Brandon Ormbrek was recognized as one of the Outstanding Students of the Year. He perseveres through all challenges while always doing his personal best. He has strong math skills with the ability to work through problems on a deeper level. We are eager to see all that he accomplishes while at Lipman Middle School!

Panorama Elementary School proudly gave the Outstanding Student of the Year Award to **Anna Arriaga-Martinez**. Anna is a kind, humble, caring and on top of all that, a great student. She is someone who likes to work behind the scenes and make sure things run smoothly. Anna is a wonderful mix of many of the best qualities of a person. Because she is humble she would never tell you how great she is, she would simply show you...daily and without fail. Although Panorama will miss her as she moves on to middle school, we can't wait to hear about the great things she is destined to accomplish in the future.

Lipman Middle School honored Rhys Humphrey and Jasmine Lee.

Rhys Humphrey--It is our honor to present our 8th grade student Rhys Humphrey with an Outstanding Student of the Year Award. From his first year at Lipman in distance learning to the very end of our 8th grade year, Rhys has stood out for his curiosity, participation, and humor. In the classroom, Rhys is an inquisitive learner and an avid reader. He is a consistent hard-worker who strives for his best in all aspects of his academics. This school year, Rhys went above and beyond with projects such as his science fair experiment on air foils and helping out around campus with other endeavors to lift up his school community. Beyond the classroom, Rhys is a consistently positive contributor to our Lipman community. Rhys showed courage this year as master of ceremonies during several school events, and he was a standout spokesperson among his peers during job shadowing and generally around campus. He was always ready and willing to lend a helping hand to anyone in need. Wishing you

ROUNDHOUSE PARK AT THE BAYLANDS:

By: **Stephanie Shakofsky** | Vice President Government Affairs, Baylands Development, Inc., sshakofsky@thebaylands.com

Last month's Luminary introduced you to The Baylands Lagoon Park, a 30-acre natural oasis that will connect to the Lagoon's natural surroundings and be fully accessible to Brisbane residents. This month, we are sharing our plans for Roundhouse Park, a 4-acre multi-purpose open space located in The Baylands' cultural and entertainment hub.

Completed in the early 1910's for the daily maintenance of steam locomotives and used heavily through the 1940's and 1950's, the Roundhouse became outdated at the end of the steam era in the 1950's. Southern Pacific continued to use the building for storage until the site was abandoned in 1982. The Bayland's roundhouse is one of only five roundhouses left in the state--and the only brick roundhouse still standing.

The proposed park design embraces the historical rail legacy of the property, providing community event spaces for celebrations and the arts, and programming spaces for outdoor dining, food, and beverage. Proposed uses include an event lawn, outdoor dining, an informal play area, garden walks, a flexible lawn that can be utilized for event staging, native gardens, an event pavilion, bermed seating, an outdoor cafe, and an open-air theater.

The main focal point of Roundhouse Park will be the preservation and repurposing of the historic Roundhouse building. Additionally, the Specific Plan proposes a railway museum paying further homage to the site's storied past with a display of historical artifacts representing the area's former industrial use.

We look forward to welcoming both current and new Brisbane residents to Roundhouse Park. To learn more about The Baylands Specific Plan, please visit the City's website, www.brisbaneca.org/baylands. To keep up to date on The Bayland's development, check out our website, www.thebaylands.org.



Schematic Design of Roundhouse Park

Proudly Serving Contractors & Homeowners Since 1980

GOLDEN STATE LUMBER

Quality and Service ★ We Deliver

Phone: (415) 468-1000
Fax: (415) 468-4690
601 Tunnel Avenue
Brisbane, CA 94005

www.goldenstatelumber.com

FAMILY DENTISTRY

JAMES E. FITZGERALD, DDS

Creating Smiles for both
Adults and Children

100 Old County Road #100B
Brisbane CA 94005
(415) 468-5353
www.jamesfitzgeraldental.com

the best in high school, Rhys--you will be missed!

Jasmine Lee--It is our distinct pleasure to honor Jasmine Lee with one of this year's Outstanding Student of the Year Awards. We all take roles in the communities we are a part of, and Jasmine has been an important part of the heart of Lipman. Jasmine is an exceptional student, and she has the capacity to be both teacher and student, which shows a special dedication and humility. Jasmine's leadership extends beyond the classroom. She has been part of our school's leadership team all year, both designing and executing events for our community, as well as crafting our school yearbook. With her kind, empathetic, inclusive and academic spirit, Jasmine left a mark on our campus and community! Good luck in high school, Jasmine!

~SAN MATEO~
CREDIT UNION

SMCU's Flex Certificate

Make deposits with ease and
withdrawals without penalty.

Looking to maximize the earning power of your money with added flexibility? San Mateo Credit Union's (SMCU) Flex Certificate means you get the advantage of a great rate with the flexibility to make withdrawals.¹ **Plus**, you have an unlimited number of deposits² during the 12-month certificate term making this a flexible, accessible and sensible choice.

The Flex Certificate features:

- A great rate of **3.75%^{APY*}**
- Make penalty-free withdrawals up to 50% of the average daily balance¹
- Make deposits any time during the term²
- Low \$1,000 minimum opening balance³

Want to learn more?

Scan the QR code or visit
smcu.org/flex12.

