



THE LUMINARY

Brisbane's Business and Community Journal

What's Inside.....	Page
Brisbane Business Bulletin.....	3
Brisbane School District News.....	6
Blast From Brisbane's Past.....	2
Trash Talk.....	6
Update on Payments to City of Brisbane's Vendor.....	3
Annual Building Benching Reporting.....	6
The Day Kennedy Was Shot.....	4

SAN FRANCISCO NON-PROFIT, LYRICAL OPPOSITION, MOVES TO BRISBANE

By: MADISON DAVIS, Brisbane Chamber of Commerce, madison@brisbanechamber.org, 415-467-7283



The Lyrical Opposition team affixes their new sign to their space at 132 Visitacion Ave



MAYOR'S Message

TURN OF EVENTS

By: COLEEN MACKIN, City of Brisbane Mayor, cmackin@brisbaneca.org, 415-529-8114

Omicron is finally waning, and the bright prospect of returning to "normal" becomes all the more tangible. Flowers are blooming, trees are budding. Warm sunshine reminds us that grey clouds will soon give way to spring weather. Days are getting longer and we'll be changing clocks this weekend.

Just as life felt full of promise again, we watched a disaster unfold in Ukraine. The countries of the world held their collective breaths as Putin brazenly declared that Ukraine is no longer a country; that it was never a country. And then the Russian tanks and convoys rolled in.

Brave Ukrainians resolve to defend their homeland. Even the civilian population has mobilized to set up roadblocks and take up

>> Continued On Page 2



SUPERVISOR'S Message

STANDING IN SOLIDARITY WITH UKRAINE

By: DAVID J. CANEPA, President of the San Mateo County Supervisors, dcanepa@smcgov.org, 650-363-4572

I applaud the Brisbane City Council and Mayor Coleen Mackin for passing a proclamation March 3 to stand in solidarity with Ukraine. My office will sponsor a similar resolution at the San Mateo County Board of Supervisors meeting March 22.

We must all show solidarity with Ukraine and the many Ukrainian American residents who

>> Continued On Page 2

Presorted Standard
U.S. Postage Paid
San Francisco, CA
Permit No. 80

*****ECRWSEDDM****
POSTAL CUSTOMER
BRISBANE, CA 94005

BRISBANE CHAMBER OF COMMERCE
50 PARK PLACE, BRISBANE, CA 94005
415-467-7283
brisbane4business@brisbanechamber.org
org



Founded by Christian Bustos aka Cross Allan, Lyrical Opposition, a 501(c)(3) non-profit artist collective, now calls Brisbane home at 132 Visitacion Ave. The organization aims to "cultivate lyrical artists to oppose injustice through social awareness and systemic change." Within the collective are rappers, poets, filmmakers, musical artists, and therapists who use their unique skillsets to bring awareness to different issues.

Creative Director Fego Navarro sat down with me to discuss the many facets of Lyrical Opposition and how the organization has evolved. Fego explains that it all started when Cross established a rap group under the name Lyrical Opposition. He began scheduling shows which opened the door to workshops. Cross realized how performance art could be a tool to oppose injustice and drive change. Lyrical Opposition refocused as a non-profit, and the rest is history.

One of the ways the organization connects with communities is by partnering with schools to host workshops and classes. Lyrical Opposition brings together voices from diverse backgrounds to engage with students in relatable ways. Often, the organization finds that teachers have trouble understanding their at-risk students, whereas representatives from Lyrical Opposition can "speak the same language" because of shared experiences. During workshops, students learn how to write and perform a rap. Some students feel more

comfortable expressing their feelings through rap than other forms of communication. By utilizing rap as a shared interest, Lyrical Opposition can connect with students in a way that most educators have yet to try. Fego explains that when students feel heard and understood, they open up about their struggles and let their guard down. Trust can build, healing can begin, and educators can develop a deeper understanding of their pupils.

During a hip-hop celebration called "Rock The School Bells" at Skyline College, representatives from Lyrical Opposition lead a workshop for students about how hip-hop began. From there, students explored different periods of hip-hop's development and how it grew into a global movement. Students learned how to conceptualize and write a rap, communicating their perspectives through this medium. In addition, representatives from the organization also taught a year-long course at June Jordan High School in the Excelsior, covering similar curriculum.

Another way Lyrical Opposition uses performance art for social justice is through activism. Fego expresses that participating in protests, vigils, and marches is one of the ways Lyrical Opposition can work in communities. It's no secret the pandemic has motivated Asian hate and violence. To highlight the impact this has had on Asians, Lyrical Opposition works to amplify Asian

>> Continued On Page 5

CHAMBER CIRCLE MEMBERS

- Baylands Development Inc
- BiRite Foodservice Distributors
- City of Brisbane
- Golden State Lumber
- Integrated Resources Group
- Lyon Medical Construction

- Peninsula Clean Energy
- Recology
- South San Francisco Scavenger Co., Inc.

The Chamber Circle is a special group of members that have committed to support the Brisbane Chamber of Commerce through sponsorships. If your business would like to become a member of the Chamber's Circle, please contact Madison Davis, President/CEO at 415-467-7283 or e-mail madison@brisbanechamber.org.

Mayor's Message, continued from page 1

weapons. Casualties mount as cities are ravaged by daily bombardment that targets the civilian population. Putin exacts his onslaught of fear and terror.

News reports have told us about the conditions there.

The constant din of shelling makes sleep tenuous if not impossible. Skies are dark grey, filled with smoke from burning buildings. The smell of gunpowder hangs in damp cold air.

Lucky ones still have electricity. They can charge their cell phones. It's their lifeline to friends, family, and news about the war. It's snowing outside. With no heat, families huddle together in bitter cold. Hours turn into days in basements and shelters.

There's no food, no water; just fear, despair, whimpers of children, and the wails of hungry

babies.

As the shelling comes closer it's time to leave. Imagine having minutes to decide what to take. Imagine taking a final gaze at your belongings, and the ache of knowing you may never see your home, your city, your friends, or your spouse again.

People scramble through deserted streets, hoping to make their way to a bus, then a long ride to a train station. Trains are packed solid; many, standing-room only. The westward journey takes hours and sometimes trains take fire from Russian troops along the way.

Those who manage to cross the border become "refugees". A different country, an uncertain future; exhaustion mixed with pangs of deep loss and anguish.

An estimated two million Ukrainians have already fled. More will follow.

The Putin invasion is close to 15 days now, and it feels like time stands still, as we hang onto daily

news from afar.

At our recent Council Meeting I read a proclamation of solidarity with Ukraine. We simply cannot tolerate this unprovoked aggression. We must stand up for the people of Ukraine.

While the heroic fathers, brothers, uncles and spouses stayed behind to fight for their country, will you please help their wives, sisters, grandmothers, and children who've become refugees. Most of them have only what they could carry...a small backpack or suitcase. Half of the two million refugees are children.

My sincere appreciation to our Brisbane Lions who've paved the way for you to help. Simply use the link below to donate to our Brisbane Lions. They'll transfer funds directly to the Lions Clubs they contacted in Poland who are actively supporting refugees:

<https://secure.givelively.org/donate/brisbane-lions-charities-inc/support-for-ukraine>

the country, state and San Mateo County has with Russia and the Russian government.

I sent a letter to the CEO of the San Mateo County Employees' Retirement Association and County Treasurer March 2 urging both SamCERA and the Treasurer's Office to immediately analyze and disclose all investments with ties to Russia and the Russian government and to divest in such investments immediately.

If you are interested in learning how you can help Ukrainians during Putin's war, check out a San Francisco-based nonprofit called the Ukrainian American Coordinating Council at its website uaccusa.org.

Supervisor's Message, continued from page 1

reside in San Mateo County and the Bay Area in the struggle to defend their nation against the unprovoked war Vladimir Putin has started.

My heart goes out to the more than 1 million Ukrainian refugees who have been forced to flee their homeland and the hundreds of lives already lost, including women and children because of the Russian invasion.

We must all condemn the violence and suffering inflicted on the Ukrainian people, who like all of us in San Mateo County, want nothing more than to live in peace, free from fear and terror.

America and its allies must do all it can to end this conflict, including divesting in any investments

BLAST FROM BRISBANE'S PAST

By: **MADISON DAVIS**, Brisbane Chamber of Commerce, madison@brisbanechamber.org, 415-467-7283

The following article is from the November 8, 1979 issue of the *Brisbane Bee*

B of A Branch: Angry Teller Nabs Robbery Suspect

She wanted to make a withdrawal, but the way she asked made teller Tim Cummings angry. "Give me all your money or I'll blow your head off," she said.

Cummings complied. As the woman made a speedy exit through the rear of the Bank of America branch on Old County Rd., several thoughts flashed through Cummings' mind.

"I really feel about people...and I knew she was scared. I wasn't positive that she didn't have a gun. But it had got me angry, the way she threatened my life. I thought, it's gotta stop" Cummings told the Bee yesterday.

So he took off after the woman. In the meantime the silent alarm had been triggered at the police station, alerting officer Tim Guiney.

Guiney and Cummings caught the woman at the intersection of Visitacion and San Bruno avenues.

Taken into custody and booked at the north county jail was Karin Glin, 18, of San Francisco. She is being held on \$20,000 bail.

Police recovered approximately \$1,391. The total amount taken remains undetermined until the books are checked.

Police said yesterday that the possibility Glin has an accomplice in a get-away car is being investigated.

The robbery, which took place Friday at 3:50PM, could result in Cummings receiving a reward from the bank.

**2022 Board of Directors**

Chairperson of the Board
Daniel Carter

Lyon Medical Construction

Vice President of the Board

Sue Cochran

Cochran Construction

Secretary of the Board

Teresa Montgomery

SSF Scavenger Company, Inc.n

Treasurer of the Board

Tamara Heath

Golden State Lumber

Members of the Board

Freddy Beaman

US Bank

Rich Borghello

Recology

Bruce Bonar

Murray Company

Cristian Cabrera

J Style at Home

Dilmohan S. Chadha

Integrated Resources Group, Inc.

Jason Cranston

JLL

Gustavo De Almeida

DoubleTree Hotel by Hilton

Shane Maddox

Bamko

Mary Shulenberg

Parle Enterprises

Jennifer Wilder-Smith

BiRite Foodservice Distributors

President and CEO
Publisher/Editor of the Luminary
Madison Davis

(415) 467-7283

madison@brisbanechamber.org

Luminary Layout by

Christine Deyto

(415) 216-7044

cdeyto@gmail.com

Published by the Brisbane Chamber of Commerce
50 Park Place, Second Floor
Brisbane, CA 94005
(415) 467-7283

e-mail: brisbane4business@brisbanechamber.org

website: www.brisbanechamber.org

[Facebook.com/brisbanechamberofcommerce](https://www.facebook.com/brisbanechamberofcommerce)

[Linkedin.com/company/brisbanechamber](https://www.linkedin.com/company/brisbanechamber)

Deadline for Articles and Advertisements:
2nd Wednesday of each month

E-mail your article, advertisement or questions
madison@brisbanechamber.org (415) 467-7283.

Advertisements are interactive on the Luminary
posted to the web and on social media.

Mission Statement: The purpose of the Brisbane Chamber of Commerce is to create an atmosphere in which business prospers and the community thrives.

The Luminary is printed using recycled paper
and environmentally-friendly soy-based ink.

★ MIDTOWN MARKET

**✓ WE ARE OPEN ★
TO SERVE THE COMMUNITY**

Open Every Day 6:00am-12:00am Year Round

**Groceries, Bakery, Produce,
Dairy, Cheese, Deli, Coffee, Tea,
Sundries, Flowers, Liquor, Wine, and Beer**

**★ 249 Visitacion Avenue
Brisbane, CA 94005**

(415) 467-1424

Our Community Is At The Heart of Everything We Do.

JOIN US
FOR A MIXER

Wednesday, March 16 from 5-7PM

Hosted by the Brisbane Lunch Truck

3501 Bayshore Boulevard

RSVP TO: madison@brisbanechamber.org





BRISBANE BUSINESS BULLETIN

“The Brisbane Business Bulletin” allows Brisbane Chamber of Commerce members to communicate brief bits of news to the public such as change of hours, new product offerings, upcoming events, etc. If you are interested in listing a news item next month, please contact Madison Davis at madison@brisbanechamber.org

Next Chamber Mixer Will be Wednesday, March 16th at the Brisbane Lunch Truck

Join us for our upcoming mixer on March, 16th from 5 pm-7 pm, hosted by the Brisbane Lunch Truck, 3501 Bayshore Blvd. Attending a mixer is an excellent way to network with other business professionals and community leaders. Please RSVP to madison@brisbanechamber.org.

Brisbane Chamber Scholarships Available

The Brisbane Chamber of Commerce offers college scholarships to graduating high school seniors. Applicants must be Brisbane residents, dependents of active Brisbane Chamber of Commerce members, or dependents of City of Brisbane employees with a 3.0 GPA or higher. Visit our website: brisbanechamber.org/scholarships for more information. Applications are due by April 15th.

San Mateo Credit Union’s 2022 Educational Scholarship Program is Now Open!

SMCU is offering two \$5,000 scholarships to graduating high school seniors to help cover the costs such as tuition, housing, books, and meals. To be eligible, one must be a class of 2022 high school senior or a 2021 graduate who took a gap year and is enrolling in a college or technical school for the first time. The deadline to apply is Friday, March 26th at 5pm. For more details and to apply: smcu.org/scholarships

COVID-19 Rent Relief

The Brisbane City Council has made \$100,000 in rental assistance available to those that need it. Brisbane’s Rental Assistance Program is being administered by Samaritan House, with the YMCA Community Resource Center processing the applications. Please call at (650) 276-4101 or send an email to crc@ymcasf.org to get the application process started today! The program covers 100% of unpaid rent and utilities for eligible renters and their landlords who have been impacted by the pandemic. Applying to the program will not impact your residency status or your path to citizenship.

Welcome to Our New Chamber Members!

The Brisbane Chamber members wishes to welcome our new members, Nick Corman, Mama Mia Pizza, and Lyrical Opposition! Interested in becoming a member? Curious how the chamber can help your business? Visit brisbanechamber.org/membership to learn more!

UPDATE ON PAYMENTS TO CITY OF BRISBANE’S VENDORS/ SUPPLIERS/CONTRACTORS

By: **CAROLINA YUEN**, Finance Director, City of Brisbane, cyuen@ci.brisbane.ca.us

The City of Brisbane has partnered with Nvoicepay, an ePayables solution, to expand our electronic payments program. Through Nvoicepay, we aim for the continued conversion of our vendors from manual check payments to electronic payments: Mastercard and ACH/EFT/Direct Deposit. Apart from receiving payments faster, vendors who opt for electronic payments will have access to their own payment portal to view payment history, print remittance copies, and update administrative information.

For more details, please visit the City of Brisbane website, Finance Department (<https://www.brisbaneca.org/finance>) where the enrollment form, enrollment link and FAQs can be found or contact the City’s Finance Department at 415-508-2150.

Jason Cranston
 Managing Director
 Commercial Real Estate Brokerage
 Advisory & Transaction Services
 Lic. #01253892


JLL
 Jones Lang LaSalle



Jones Lang LaSalle Brokerage, Inc.
 4085 Campbell Avenue, Suite 150
 Menlo Park, CA 94025
 T +1 650 480 2100 M +1 650 333 5173
jason.cranston@am.jll.com



Bringing You Home™

Brisbane homes that create the most buyer interest and score the highest prices are homes that will sell for between \$1.2-1.7M.

These homes are typically between 1200-1800 square feet of all condition types.

If you’ve been thinking of taking advantage of the market, the time is now, as there is less inventory but remain many buyers. #sellersmarket

Most Brisbane buyers are not from here, so let us help them find out why Brisbane is worth your price.

Text me and find out how much your home is really worth. (Hint: Zillow / Redfin are often wrong)



Kenneth Pang
 Realtor® DRE 02136363
 415.475.9159
moves@sqftbyken.com
www.sqftbyken.com

Largest Independent Brokerage in the USA / #1 in the Bay

COMPASS

Compass is a real estate broker licensed by the State of California operating under multiple entities. License Numbers 01991628, 1527235, 1527365, 1356742, 1443761, 1997075, 1935359, 1961027, 1842987, 1869607, 1866771, 1527205, 1079009, 1272467. All material is intended for informational purposes only and is compiled from sources deemed reliable but is subject to errors, omissions, changes in price, condition, sale, or withdrawal without notice. No statement is made as to the accuracy of any description or measurements (including square footage). This is not intended to solicit property already listed. No financial or legal advice provided. Equal Housing Opportunity.

San Francisco Office
580 4th Street



Brisbane Office
400 Visitacion Ave

THANK YOU FOR YOUR BUSINESS IN 2021!

WE HELPED 40 FAMILIES BUY, SELL, OR LEASE PROPERTY LAST YEAR AND WOULD LOVE TO HELP YOU ACHIEVE YOUR REAL ESTATE GOALS IN 2022.

WITH OVER 47 YEARS OF COMBINED EXPERIENCE, WE DELIVER IN ANY HOUSING CLIMATE. OUR PROVEN SALES SUCCESS RATE, LOCAL MARKET EXPERTISE, AND STRESS-FREE PROPERTY PREPARATION STRATEGY, ARE WHAT MAKE US THE MOST-TRUSTED REAL ESTATE TEAM IN BRISBANE. WHO YOU WORK WITH MATTERS.

PENDING!

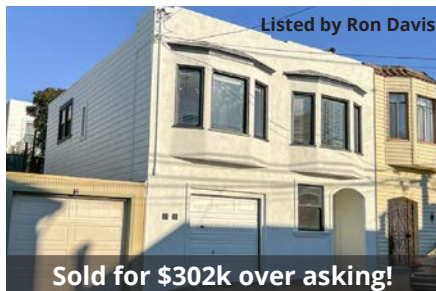


Listed by Ron Davis

Offered at \$1,348,000

432 Alvarado St, Brisbane
4 bd | 3 bth | 1700 sq ft Home +ADU

SOLD! \$1,000,000



Listed by Ron Davis

Sold for \$302k over asking!

119 Florentine St, San Francisco
2 bd | 1 bth | 768 sq ft Home

COMING SOON!



Listed by Michele Jauregui

Call for Details, Brisbane
2 bd | 2 bth | 1392 sq ft Home

CALL FOR DETAILS



Listed by Michele Jauregui

219 Tulare St, Brisbane
3 bd | 2.5 bth | 2396 sq ft Home

Thinking about Buying or Selling? Call us Today!
We offer complimentary professional staging when you list with us!
For more information visit VoyageRealEstateBrisbane.com

JAMES BALL

Realtor
DRE #01975342

415-309-5281
james@voyagerealestatesf.com



RON DAVIS

Broker, GRI
DRE #00961181

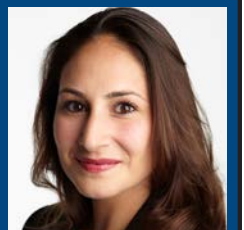
415-846-3077
ron@voyagerealestatesf.com



MICHELE JAUREGUI

Realtor
DRE #01801514

415-516-1977
michele@voyagerealestatesf.com



San Francisco Nonprofit, continued from page 1

voices, such as Lacy Nyguen, a Bay Area poet who expresses her experiences as an Asian woman through her poetry. Fego explains that using different mediums of communication and art can help people better understand the plight of others and develop empathy.

While Lyrical Opposition focuses on rap and spoken word, using film as a means of storytelling is also a central component to the non-profit. Currently, Lyrical Opposition is filming a documentary about unhoused individuals moving into tiny homes in the Bay Area. Titled *Re-entrification*, the documentary aims to humanize the stories of people grappling with homelessness and explore the causes of displacement. Fego explains, “we know that people have fears that providing housing for homeless individuals might cause an increase in drugs and crime in neighborhoods. However, our goal is to help people understand that many of the unhoused are actually working-class people with families who cannot afford to live here anymore.”

The documentary is filled with interviews from unhoused individuals but also incorporates the voices of others. Voices such as Jimmie Fail’s, who wrote and starred in a semi-autobiographical film called *The Last Black Man*

in *San Francisco*, and San Francisco’s Poet Laureate, Tongo Eisen-Martin. Fego hopes San Francisco city officials will also agree to partake in the film. They plan to wrap filming in April and finish editing soon after. In addition to interviews, the documentary also incorporates music, rap, and poetry, recorded from Lyrical Opposition’s studio space in Brisbane.

The office at 132 Visitacion Avenue serves as a hub for film, music, photography, and painting as well as a venue for pop-up shows. Fego explains that he loves working in Brisbane with amenities like the basketball courts and boba nearby. “Brisbane is a gem, a treasure most people don’t know about. Brisbane is my getaway,” he says.

Please join me in welcoming Lyrical Opposition to our community. We are coordinating a ribbon-cutting ceremony in the coming weeks and encourage you to subscribe to the Chamber’s email list to stay informed. Lyrical Opposition’s phone number is 415-903-7699, and their website is lyricalopposition.com. Be sure to follow them on Facebook and Instagram, @lyricalopposition. If you stop by to say hello, make sure to mention reading about Lyrical Opposition in *The Luminary!*

THE DAY KENNEDY WAS SHOT

By: DOLORES GOMEZ, Brisbane historian, brischic@sonic.net

November 22, 1963 was a heavily overcast morning; a cold mist was constantly wetting the ground. Our kids were in school, so the house was quiet. Carpenters were “rained out,” and my husband, Johnny was in the garage, tinkering with his work truck. I decided to watch a TV movie in the warm house, on our black and white 15 inch television. The announcer was talking in a monotone voice about the movie to be shown and casually said in a monotone voice, that “the president had been shot.” There was no emotion on his face and I thought he’d read a script wrong! Suddenly, all hell broke loose with information of a “shooting in Dallas and President Kennedy was taken, wounded, to a hospital!” I was shocked. Who would shoot our president? I hadn’t read about the dislike in Texas for Kennedy; I thought everyone admired him.

I called Johnny up from the garage and both of us were stunned as we watched this horror story sadly unfold. Soon the kids were home from school and for the next three days, all five of us sat there absolutely glued to that

small screen. I don’t think I even went out to grocery shop; we ate what was in the house. We grieved for Jackie in her pink bloodied suit as she stood by Lynden Johnson who was taking the oath of office, replacing her dead husband.

The worst shock I believe was seeing Ruby actually rush up to shoot Harvey Oswald. It was all like a dreadful nightmare. The funeral procession with Jackie and the Kennedys, marched shoulder to shoulder, strong and proud showed their strength to the shocked Americans people. It was a sorrowful scene to see the rider less horse, boots reversed in the stirrups, never to be used again. The body of our president, to lay in State while thousands, showed their respect, passed by his bier. Then into Arlington National Cemetery with its gleaming white tombstones, like soldiers standing straight in a row, and the final resting place, the Eternal Flame. Tears came quickly seeing little John John saluting his father’s casket as it passed by. To me it was as if a beloved relative died and the nation was feeling the shock in mourning. What would our country have been like if President Kennedy had the opportunity to finish his time in office? We can only speculate and hope such an event never happens again to America and its citizens who love their country, right or wrong.



YOUR BAY AREA & BRISBANE REAL ESTATE DREAM TEAM!

JOEL DIAZ | (650) 520-7483
REALTOR® #01336882

STACY HUANG | (415) 840-5704
REALTOR® #02022230



NATIONAL TOP PRODUCERS

NEW LISTINGS COMING SOON

Let us help you sell your home quickly for the best possible price!

SALE PENDING Representing Buyer

24 Blair Terrace - San Francisco
2 BED/2 BATH, 956 Sq. Ft.
Listed at: \$998,000

SOLD 1100Humboldt.com

1100 Humboldt Rd - Brisbane
5 BED/4 BATH, 1,850 Sq. Ft.
Listed at: \$1,688,000 **Sold at: \$1,825,000**

SOLD 678Kingsford.com

678 Kingsford - Hayward
3 BED/3 BATH, 1,451 Sq. Ft.
Listed at: \$688,000 **Sold at: \$751,000**

SOLD Represented Buyer

200 Santa Clara St - Brisbane
1 BED/ 2 BATH, 1,230 Sq. Ft.
Sold at: \$1,050,000

SOLD 1260TalbrynDr.com

1260 Talbryn Dr - Belmont
Lot- Plans and Permit Ready
Sold at: \$1,898,000

SOLD Represented Buyer

127 Santa Clara St - Brisbane
3 BED/ 1 BATH, 1,020 Sq. Ft.
Call for Details

SOLD 133KestrelCt.com

Record Sale Price @ THE RIDGE
133 Kestrel Ct - Brisbane
3 BED/ 2.5 BATH, 2,363 Sq. Ft.
Listed at: \$1,380,000 **Sold at: \$1,380,000**

Client-Focused | Dedicated Agents | Consistent Results ...*Call us today!*

THINKING OF SELLING? WE OFFER COMPLIMENTARY STAGING AND HOME PREPARATION WHEN YOU LIST WITH US!

想出售你的房產嗎？請致電讓交易成功的產經紀和公司！我們提供專業的上市準備和裝飾工作。謝謝！



Universal Paragon is now Baylands Development!

Have you seen our new website?



Visit us at www.BDISF.com



Garden Chapel Funeral Directors FD-805

"Here to support & guide your Family through the most difficult time."

885 El Camino Real
South San Francisco
650-583-2510
www.gardenchapel885.com

Jasama Patel
Senior Mortgage Loan Consultant



Silicon Valley Capital Funding
6020 Hellyer Ave #150
San Jose, CA 95138
(650) 438-2133 Cell
(650) 228-0980 Fax
jas@jasamapatelloans.com
www.svcfunding.com/jasama
BRE # 02024680
NMLS # 1418124

Residential and Commercial Lending • Purchase • Refinance • Cash Out • Equity Line • SBA • VA Loans • Mixed Use • Reverse Mortgage • Private Money • Hard Money • Bridge Loans • Lot and Construction Loans • Niche Lending Options • Bank Statement Loans • Stated Income Loans

better & better



Serving Brisbane and the Greater Northern California Bay Area Community with power generators for every event or emergency.

(415) 468-2868

generatorsunlimited.com

TRASH TALK

With Chamber Member Teresa Montgomery, Sustainable Programs Manager at South San Francisco Scavenger Company, and Adrienne Etherton, Sustainability Manager, Brisbane Public Works Department

Q: Why must I use my green cart?

A: The yard trimmings, food scraps and food-soiled paper collected from green carts is processed into renewable fuel and compost. If placed in your grey cart, these items are not transformed into anything useful. Instead, they take up valuable (and dwindling) landfill space and release methane into the environment. Methane is a super pollutant that contributes to global warming and can make the air we breathe unhealthy.

Q: What happens to the compost made from materials we place in our green carts?

A: It is commonly used in California’s agricultural areas to grow new crops. It is also sold or otherwise provided for commercial and residential use in parks, yards, roadsides and roadway medians, and more. Brisbane residents can get free compost for use in home gardens at the annual compost giveaway in April, courtesy of SSF Scavenger and the City of Brisbane.

Q: Why is it so important to use compost?

A: Compost use closes the loop! Without a viable market for finished product, our composting efforts wouldn’t be worthwhile. Plus, compost makes for healthy soil which sequesters carbon and retains moisture. This means crops and plants require less irrigation, which is always important in arid California, and doubly so under our current drought conditions. Compost application can also lead to less runoff, improving water quality, a nice benefit as we celebrate World Water Day on March 22nd!

ANNUAL BUILDING BENCHING REPORTING PERIOD OPENS - COMPLIANCE DEADLINE MAY 15TH

By: ADRIENNE ETHERTON, Sustainability Manager, Public Works Department, aetherton@brisbaneca.org



The Brisbane Building Efficiency Program (BBEP) recently announced its second year of mandatory reporting. Buildings required to comply should receive notification letters and/or emails instructing them to submit their energy and water benchmarking data by May 15, 2022 through the Energy Star Portfolio Manager reporting link: brisbaneca.org/bbep2021.

The City of Brisbane created the program to help make existing buildings more energy and water efficient, saving owners money, improving the safety and comfort of our building stock, and reducing emissions that drive climate change. Established by a City ordinance in 2019, the program requires most owners of local buildings 10,000 square feet or more to benchmark their building’s energy and water use and report results annually on May 15th, starting last year.

Roughly 87% of buildings on the BBEP roster achieved some level of compliance in 2021, the first reporting year which covered the 2020 calendar year. Building owners and representatives that reported last year should find the process simple to continue. Buildings which did not report last year are encouraged to contact City staff at bbep@brisbaneca.org or (415) 347-2010 to come into compliance.

“Whether it be providing guidance on unique building situations or holding a screenshare to walk through the steps with you, we are here to help” shared City of Brisbane Sustainability Manager Adrienne Etherton. Learn more and find compliance resources at brisbaneca.org/bbep.

Why are Californians required to separate organic waste from garbage?

In a landfill environment, organic waste releases a super pollutant called methane.

Methane is a greenhouse gas 84 times more potent than carbon dioxide.

Landfills are the 3rd largest producer of methane in the state.

Please do your part to reduce the impacts of climate change – feed Ozzy the Organics Cart!

To learn more, please visit:
www.calrecycle.ca.gov/organics/slcp
www.brisbaneca.org/waste-recycling
www.ssfscavenger.com

An important message from

BRISBANE School District News

ON THE ROAD AGAIN

By: RONAN COLLVER, Brisbane School District Superintendent, rcollver@brisbanesd.org

As we approach the 2 year milestone of sending our students home due to worldwide COVID health concerns; we desperately look for signs that the life we once knew is returning. One of those signs for me is the increase in field trip requests.

The Brisbane School District feels very strongly about the educational benefits of taking our students to locations off our campuses and away from our classrooms to enhance our students’ educational experience. Part of our District’s Mission Statement says: Students will reach their full and unique potential academically, emotionally, socially, and physically. Students will engage in and learn from the real world, participating in and contributing to their communities. Field trips or “being there experiences” have been a cornerstone to the educational model of our District as they build first-hand knowledge for our students.

So far this year, we have had classes visit farms, museums, gardens, ranches, libraries, fire stations and government buildings. These trips have focused on science lessons, history lessons, writers workshops and community building to name a few. Due to the 5th grade classes not being able to attend Outdoor Ed. last year, we were able to send both the 5th grade and 6th grade classes to Outdoor Ed. this school year. Transitioning from virtual field trips to in person field trips has all of the students excited and the educational value of these trips cannot be matched.

I ask that everyone in the community continue to be vigilant and responsible about their role in our community so that we can continue to increase the amount of field trips our students can attend. These trips are an essential part of the educational program we are able to offer to our families.

J Style at Home Inc.

www.jstyleathome.com

Custom Design and Cabinets that fit your life style...
Dedicated Professionals that meet your Scope, Schedule and Budget!

3890 Bayshore Blvd, Brisbane CA 94005
DIRECT 415 / 494 5661

EMAIL customer-service@jstyleathome.com
FAX 415 / 494 5864

California Contractor Lic. 963554

GOLDEN STATE LUMBER

Proudly Serving Contractors & Homeowners Since 1980

Phone:
(415) 468-1000

Fax:
(415) 468-4690

601 Tunnel Avenue
Brisbane, CA 94005

www.goldenstatelumber.com

SAVE THE DATE!

Just Listed!

YOU'RE INVITED TO OUR SHREDDING PARTY!



Bring all of the documents you've been wanting to shred to our **FREE** Shredding Party! We will have a mobile shredding truck on-site to safely dispose of all your unwanted documents while you watch! There is no cost for this service. This is our way of saying "thank you" to the residents of Brisbane for your support of our business over the years.

Saturday, May 14th - 9am-12pm
Brisbane Post Office | 280 Old County Road, Brisbane

PLEASE NOTE:
 Paper Only. No Metal or Plastic. Limit 3 Boxes. Space is Limited to Truck Capacity.

**143 Red Hawk Court
 Brisbane**

2 Bedrooms | 2 Bathrooms
 1,437 Square Feet
 2 Car Garage
Listed for: \$948,000



Kathy Wall & Mike Darling
 REALTORS®
(415) 608-4168
 KathyWallRealEstate@yahoo.com



INTERO
 REAL ESTATE SERVICES
 A Berkshire Hathaway Affiliate
DRE# 01163766 | DRE# 01267936



SURFACES SELECTION SERVICE
www.marblecompany.com

Natural Stone • Quartz • Porcelain • Tile




Call us today to schedule a visit!

Brisbane Showroom
 275 Valley Drive,
 Brisbane, CA 94005
 415-657-0280

FAMILY DENTISTRY

JAMES E. FITZGERALD, DDS

Creating Smiles for both
 Adults and Children



100 Old County Road #100B
 Brisbane CA 94005
(415) 468-5353
www.jamesfitzgerald dental.com



Family Owned // // // // // **Locally Sourced**

BiRite is a third generation, broadline foodservice distributor that is proud to service restaurants, hotels, caterers, and universities throughout the greater Bay Area.



415.656.0187 www.birite.com

FOLLOW US!



~SAN MATEO~
CREDIT UNION

PREMIUM CHECKING

Perks piled high.

Premium Checking that
checks all the boxes.

- Earn 1% APY* on your first \$50,000
- No Monthly Fee
- Overdraft Protection + Courtesy Pay
- Access to 30,000+ free ATMs
- Visa® Debit with Apple Pay®,
Google Pay™ + Samsung Pay®

Set your sights &
get your money right.



Scan the
code or visit
smcu.org/join
to get started.

*APY = Annual Percentage Yield as of 1/1/2022; subject to change. 1.00% APY paid on the first \$50,000 in average daily balances and 0.05% APY paid on any average daily balances above \$50,000 if three monthly (statement cycle) requirements are met, as follows: (1) 10 or more debit card purchases or debit card payments are posted (ACH/bill pay payments and ATM transactions are not counted toward the monthly requirement), (2) one direct deposit, payroll deposit, or external ACH transfer is received, (3) eStatements are selected. All requirements must be applied to the Premium Checking account. If the monthly (statement cycle) requirements are not met in their entirety, the APY paid will be 0% for that statement cycle. Limit one (1) Premium Checking account per membership.